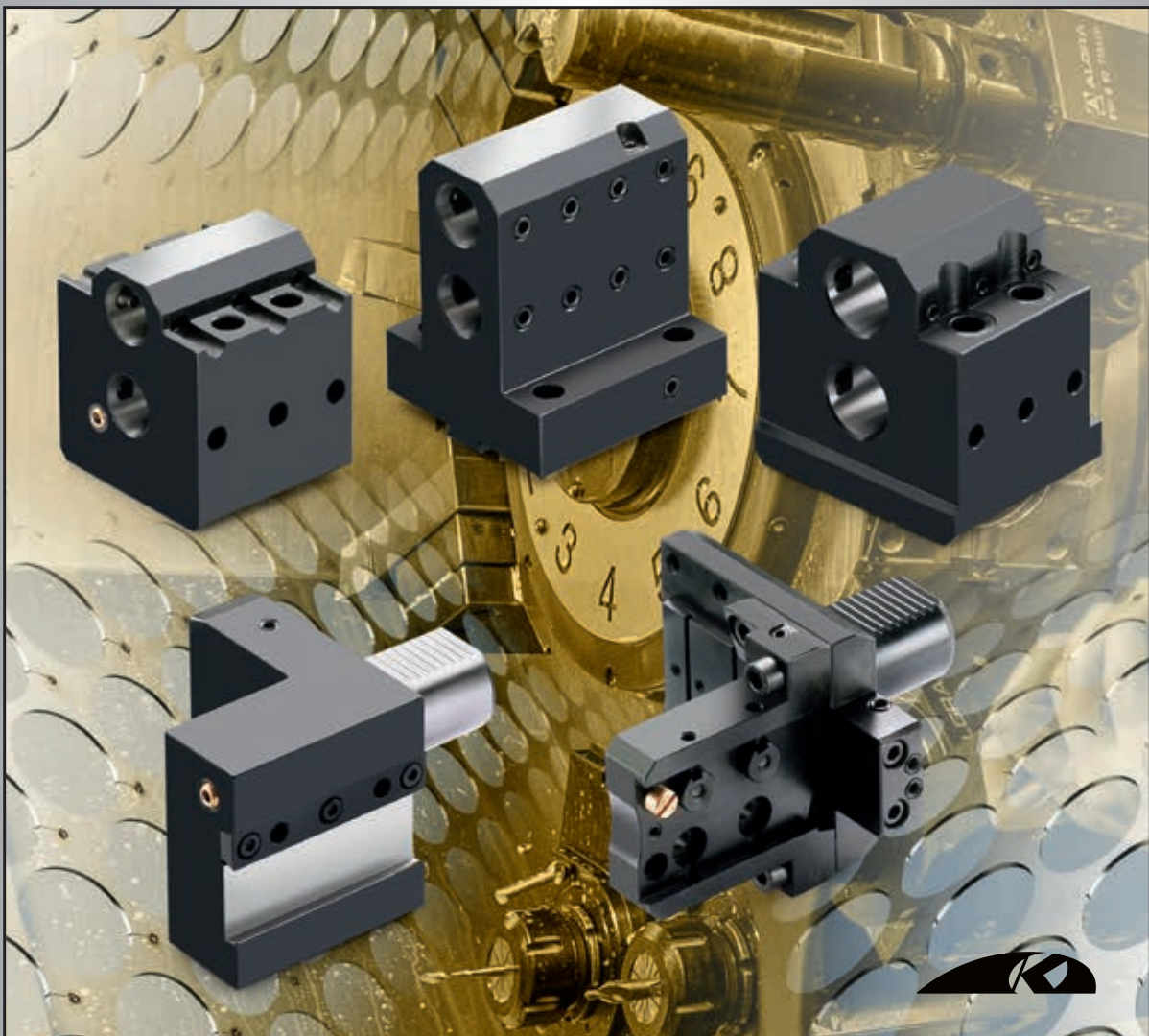




# KINTEK®

COMPONENTI INNOVATIVI TECNOMECCANICI



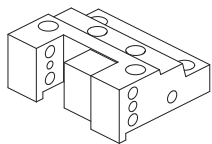
TOOLHOLDERS FOR CNC LATHES  
**HAAS**

**OKUMA**

LB15  
LB25  
LB15II  
LB300

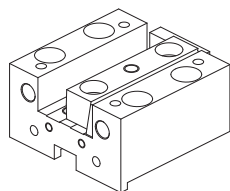
**HAAS**

SL20 - SL30  
ST-20 - ST-25  
ST-30 - ST-35  
DS-30



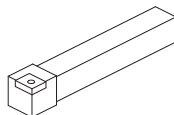
128-420110

Face and O.D.  
cutting holder

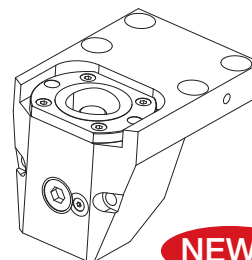


128-32001

Face and I.D.  
cutting holder



Qualified tool  
25x25 mm

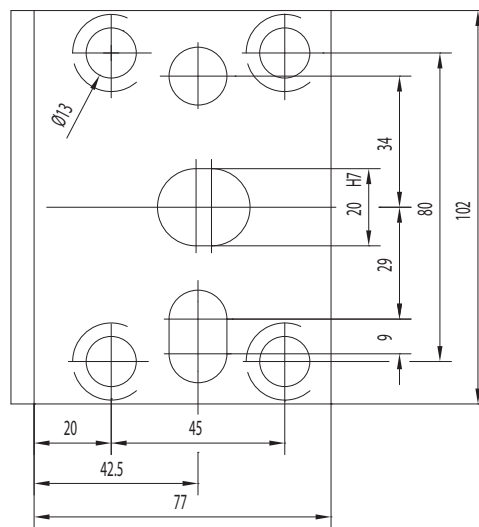


128-12072 (C40)  
128-12059 (C50)

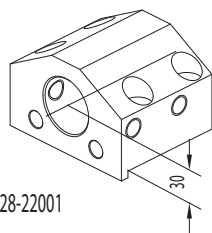
Face and O.D.  
cutting holder  
Poligonal

**NEWS**

CONNECTION

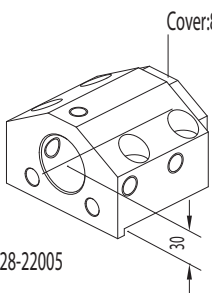


ACCESSORIES



128-22001

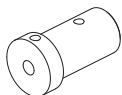
Toolholder  
for boring bar  
Ø40 mm



128-22005

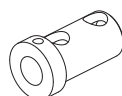
Cover:832-003056

Combi toolholder  
for boring bar and  
insert drill with internal  
coolant  
Ø40 mm



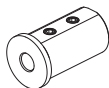
Boring bar sleeve and  
throw-away drill socket

- 165-64013 (Ø10)
- 165-64014 (Ø12)
- 165-64015 (Ø16)
- 165-64016 (Ø20)

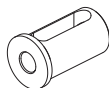


Boring bar sleeve and  
throw-away drill socket

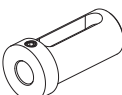
- 165-64017 (Ø25)
- 165-64018 (Ø32)



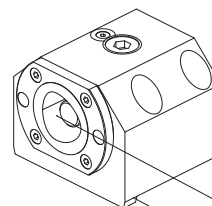
Boring bar sleeve  
165-64247 (Ø8)  
165-64248 (Ø10)  
165-64249 (Ø12)



Boring bar sleeve  
165-64251 (Ø16)  
165-64253 (Ø20)  
165-64254 (Ø25)  
165-64255 (Ø32)



Boring bar sleeve  
165-64241 (Ø16)  
165-64243 (Ø20)  
165-64244 (Ø25)  
165-64245 (Ø32)

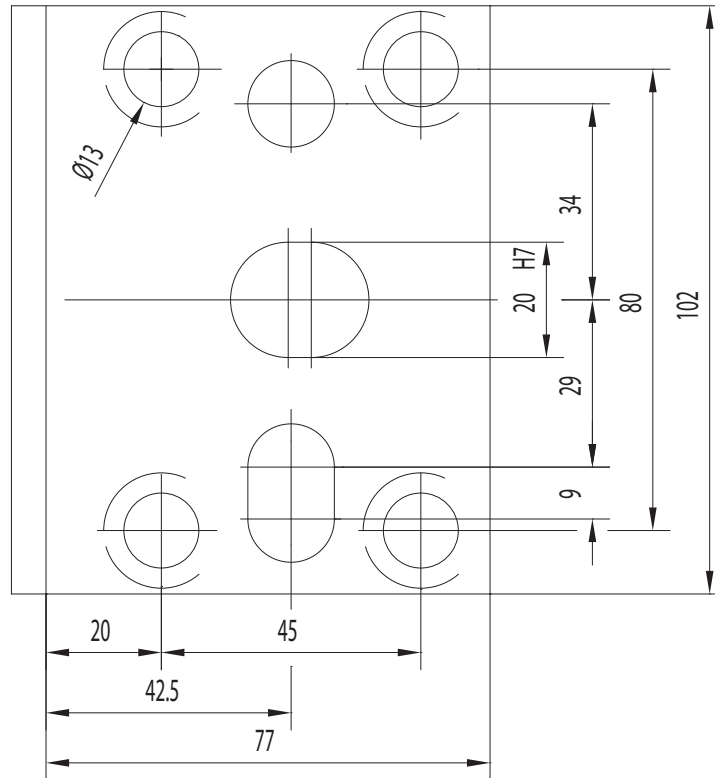


128-12071 (C40)  
128-12057 (C50)

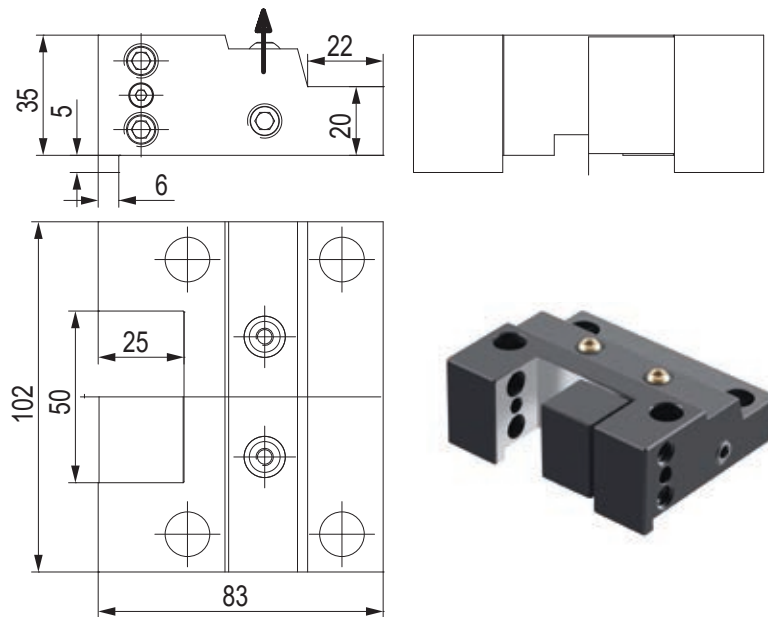
Boring bar holder  
Poligonal

**NEWS**

## CONNECTION

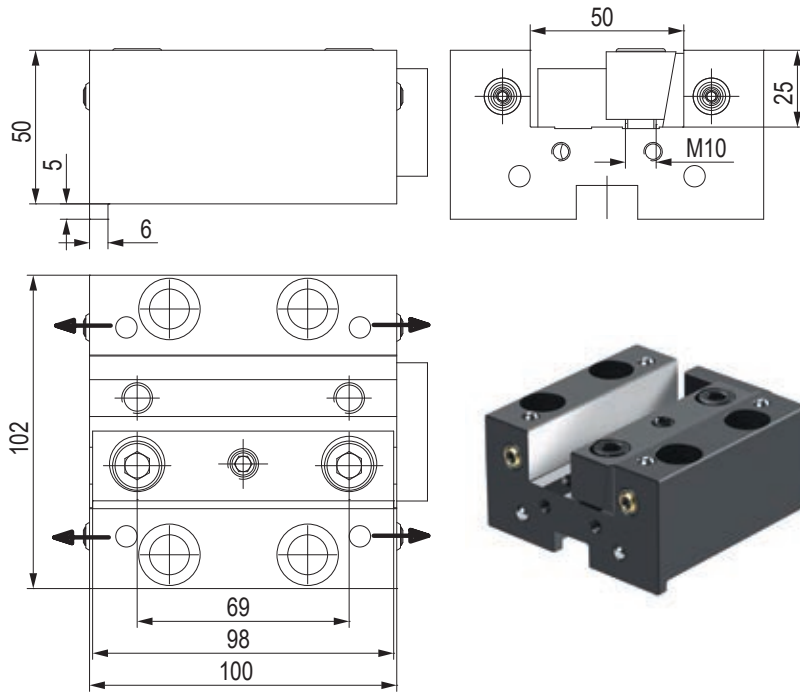


## PORTAUTENSILE RADIALE - RADIAL TOOLHOLDERS



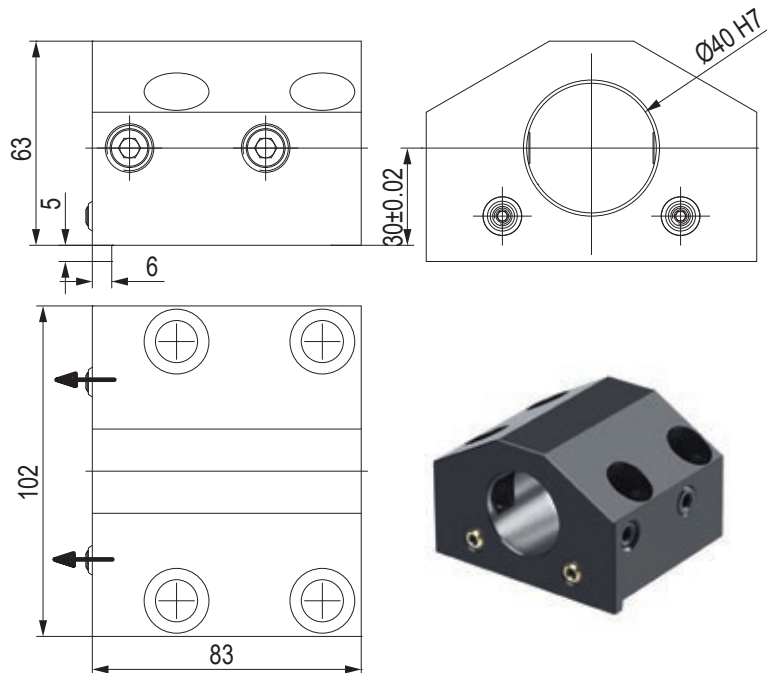
CODE N.	CLAMPING SCREW	CLAMPING PLATE	SCREW FOR CLAMPING PLATE	SPRING FOR CLAMPING PLATE	COOLANT NOZZLE
128-420110	811-104030	832-002069	811-302004	824-101010	833-001080

## PORTAUTENSILE ASSIALE - AXIAL TOOLHOLDERS



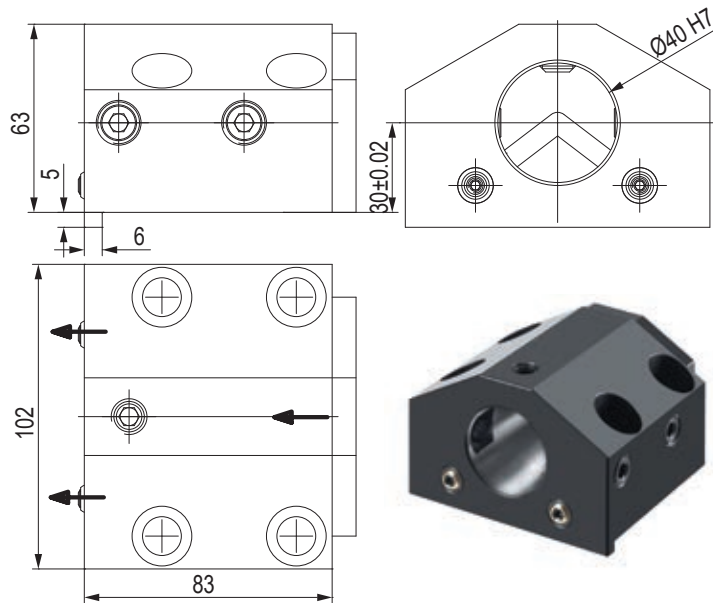
CODE N.	CLAMPING PLATE	COOLANT NOZZLE	STOP PLATE	SCREW FOR PLATE
128-32001	832-007220	833-001110	832-003045	811-101026

## PORTAUTENSILE PER BARENI - TOOLHOLDER FOR BORING BAR



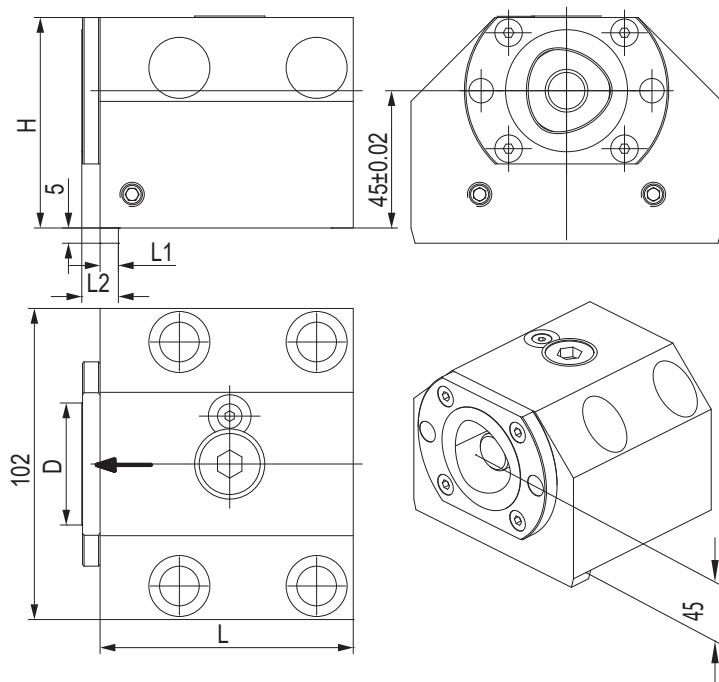
CODE N.	CLAMPING SCREW	COOLANT NOZZLE
128-22001	811-104069	833-001110

# PORTAUTENSILE COMBINATO PER BARENI E PUNTE A INSERTI COMBI TOOLHOLDER FOR BORING BAR AND INSERTDRILL



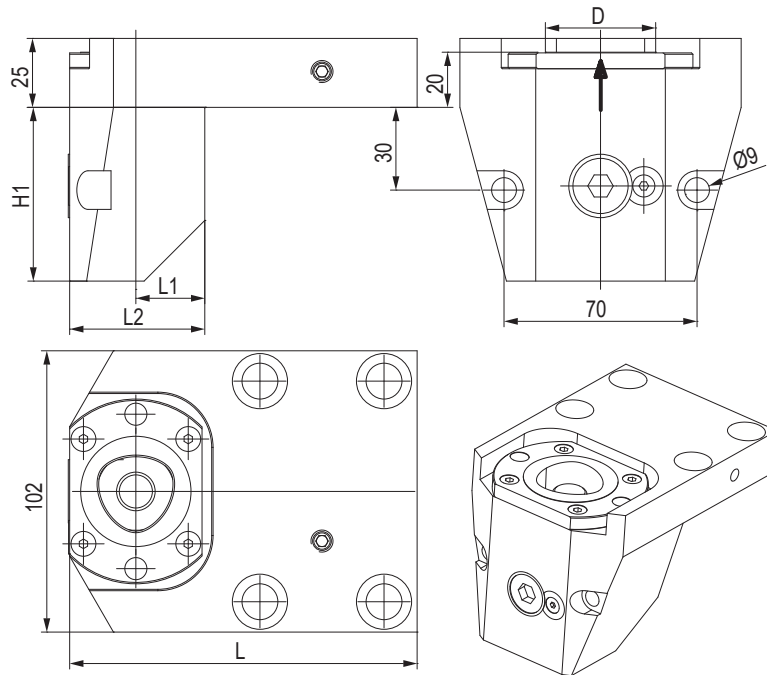
CODE N.	CLAMPING SCREW1	CLAMPING SCREW2	COOLANT NOZZLE	COVER	SCREW FOR COVER
128-22005	811-104069	811-102043	833-001110	832-003056	811-101016

# PORTAUTENSILE CON USCITA POLIGONALE POLIGONAL TOOLHOLDERS



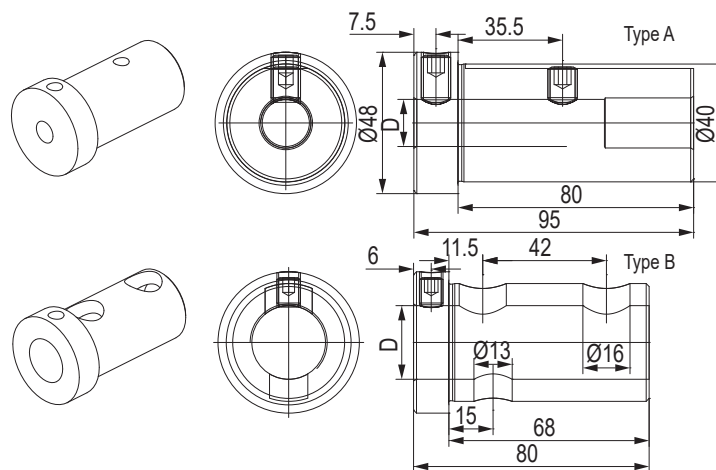
CODE N.	CAPTO	D	H	L	L1	L2	CLAMPING UNIT
128-12071	C40	40	69	83	6	12	CXC40-10
128-12057	C50	50	77	88	11	19	CXC50-10

## PORTAUTENSILE CON USCITA POLIGONALE POLIGONAL TOOLHOLDERS



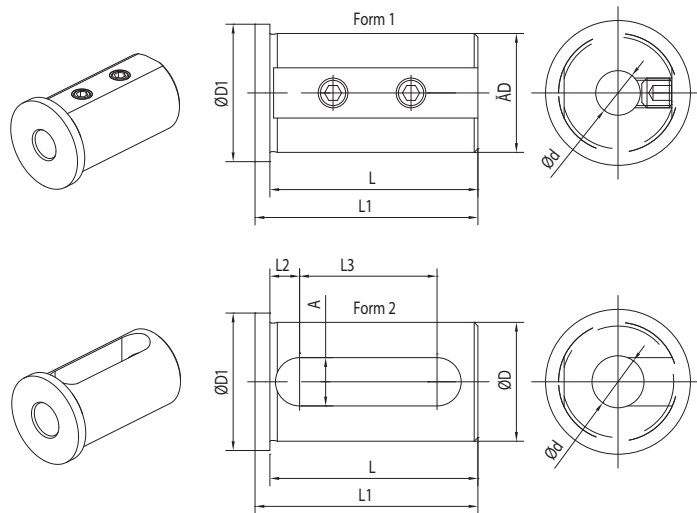
CODE N.	CAPTO	D	H	L	L1	L2	CLAMPING UNIT
128-12072	C40	40	63	126	25	49	CXC40-10
128-12059	C50	50	75	142	33	65	CXC50-10

## BUSSOLA PER PORTABARENI BORING BAR SLEEVE FOR TOOLHOLDER



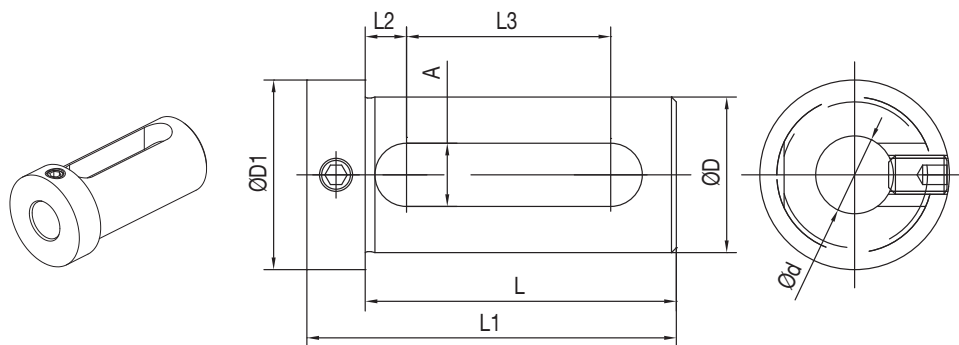
CODE N.	Ø	D	TYPE	SCREW1 (Long)	SCREW2 (Short)
165-64013	40	10	A	811-10230	811-10229
165-64014	40	12	A	811-10237	811-10236
165-64015	40	16	A	811-10237	811-10236
165-64016	40	20	A	811-10236	811-10235
165-64017	40	25	B	811-10227	-
165-64018	40	32	B	811-10226	-

## BUSSOLA PER PORTABARENI DRILL SOCKET FOR TOOLHOLDER



CODE N.	D	d	FORM	L	L1	L2	L3	A	D1
165-64247	40	8	1	71	75	-	-	-	45
165-64248	40	10	1	71	75	-	-	-	45
165-64249	40	12	1	71	75	-	-	-	45
165-64251	40	16	2	71	75	8	52	13	45
165-64253	40	20	2	71	75	8	52	13	45
165-64254	40	25	2	71	75	8	52	13	45
165-64255	40	32	2	71	75	8	52	13	45

## BUSSOLA PER PORTABARENI DRILL SOCKET FOR TOOLHOLDER



CODE N.	D	d	L	L1	L2	L3	A	D1
165-64241	40	16	74	88	9	51	14	48
165-64243	40	20	74	88	9	51	14	48
165-64244	40	25	74	88	9	51	14	48
165-64245	40	32	74	88	9	51	14	48

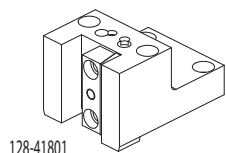
# DOOSAN PUMA (BMT65)

PUMA 2100/2600 (M,LM,MS,LMS)  
 PUMA 2100/2600 (Y,LY,SY,LSY)  
 PUMA 300 (M,MS,MB,MC)  
 PUMA 3100 (M,LM,LY,XLM,XLY,ULM,ULY)  
 PUMA MX2000/2500  
 PUMA MX2600 (T,ST)  
 PUMA TT2500 (MS/SY)  
 PUMA V400 (M)  
 PUMA VT450 (M,2SP)  
 PUMA TT2000

**HWACHEON**  
 CUTEX-240  
 HI-TECH200/T2-Series  
 HI-TECH300/400  
 VT-450

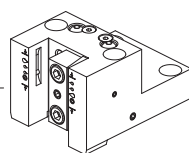
**HYUNDAI WIA**  
 L2100SY  
 SKT-200/250TTSY  
 SKT-250/300 (L,M)  
 SKT-250/300 (MS)  
 L300M / MS  
 LM 2000 / 2500 TTM  
 2500 TTMS / 2500 TTSY

**MAXSIN**  
 BMT65  
**SMEC/SAMSUNG**  
 SL25 / SL35  
 PL 20/25M - PL 35LM - PL 2000/2500Y  
**TONGTAI**  
 TMT2000  
**VICTOR**  
 VTURN-A26 (YSCM)  
**HAAS**  
 ST-20 - ST-25 - ST-30  
 ST-35 - DS-30Y  
 ST-20Y - ST-25Y - ST-30Y - ST-35Y



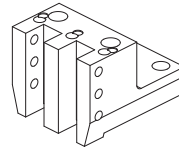
128-41801

Face and O.D. cutting holder

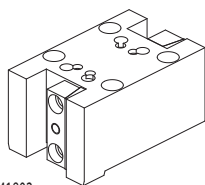


128-41801-IC i.Coolant

Face and O.D. cutting holder

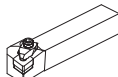


128-41803



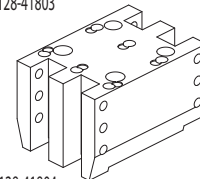
128-41802

Face and O.D. cutting holder

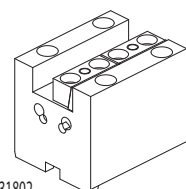


Qualified tool 25x25 mm

Face and O.D. cutting holder

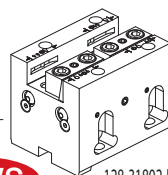


128-41804



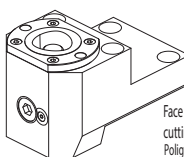
128-31802

Face and O.D. cutting holder



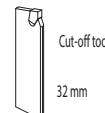
128-31802-IC i.Coolant

Face and O.D. cutting holder Polygonal



128-11819 (C40)  
128-11809 (C50)

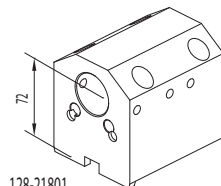
Cut-off holder



Cut-off tool 32 mm

**NEWS**

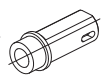
## ACCESSORIES



128-21801

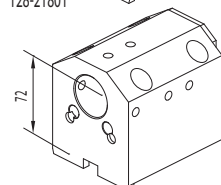
Toolholder for boring bar

Ø40 mm



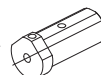
Drill socket D40

- 114-34012 <MT1>
- 114-34013 <MT2>
- 114-34014 <MT3>

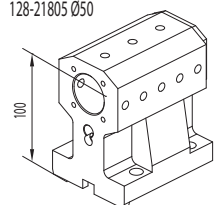


128-21802 Ø40  
128-21805 Ø50

Combi toolholder for boring bar and insertdrill

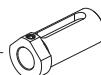


- 165-64089 (Ø10)
- 165-64090 (Ø12)
- 165-64091 (Ø16)

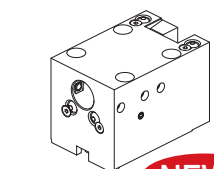


128-21803 Ø40  
128-21806 Ø50

Combi toolholder for boring bar and insertdrill

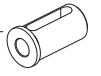


- 165-64092 (Ø20)
- 165-64093 (Ø25)
- 165-64094 (Ø32)



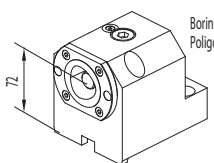
128-11821 Ø32/25x25

Combi toolholder



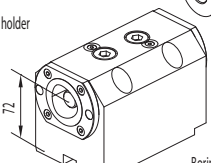
Throw-away drill socket D40

- 165-64095 (Ø20)
- 165-64096 (Ø25)
- 165-64097 (Ø32)



128-11817 (C40)  
128-11805 (C50)

Boring bar holder Polygonal



128-11818 (C40)  
128-11807 (C50)

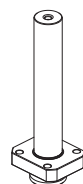
Boring bar holder double Polygonal

- Boring bar sleeve D40
- 165-64247 (Ø8)
- 165-64248 (Ø10)
- 165-64249 (Ø12)

- Boring bar sleeve D40
- 165-64251 (Ø16)
- 165-64253 (Ø20)
- 165-64254 (Ø25)
- 165-64255 (Ø32)

- Boring bar sleeve D40
- 165-64241 (Ø16)
- 165-64243 (Ø20)
- 165-64244 (Ø25)
- 165-64245 (Ø32)

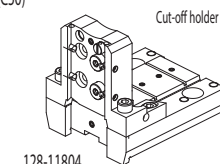
- Boring bar sleeve D50
- 165-65017 (Ø25)
- 165-65018 (Ø32)
- 165-65019 (Ø40)



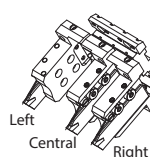
Control pin 137-00199



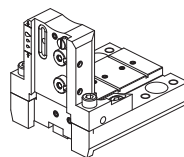
Protection cover 137-00254



128-11804



Driven tools



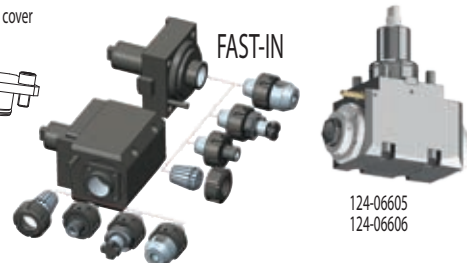
128-11804-IC i.Coolant



124-06501  
124-06508 i.Coolant



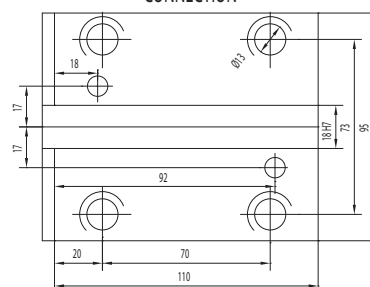
124-06502  
124-06512 i.Coolant  
124-06521 i.Coolant 80 BAR



FAST-IN

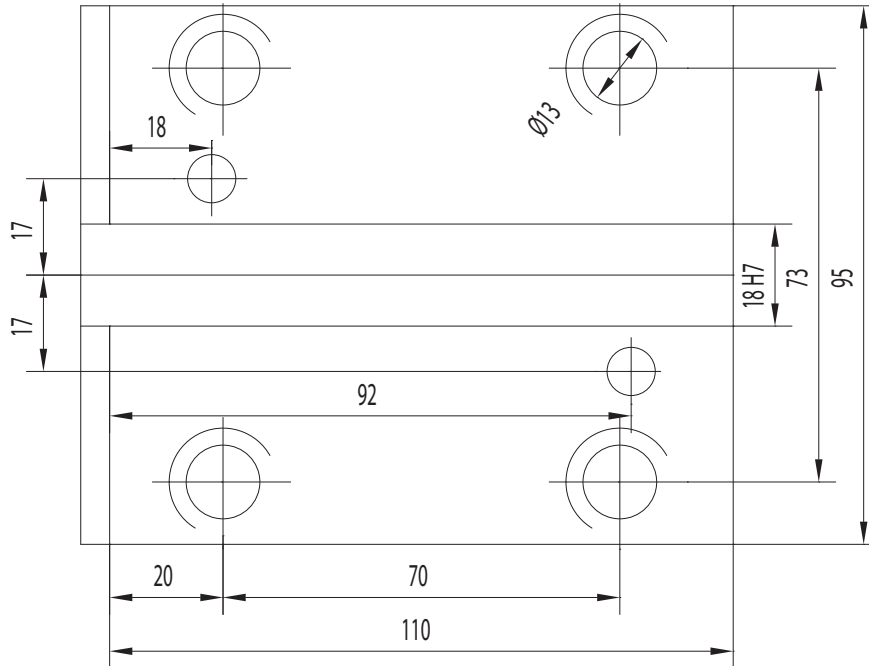
124-06605  
124-06606

CONNECTION

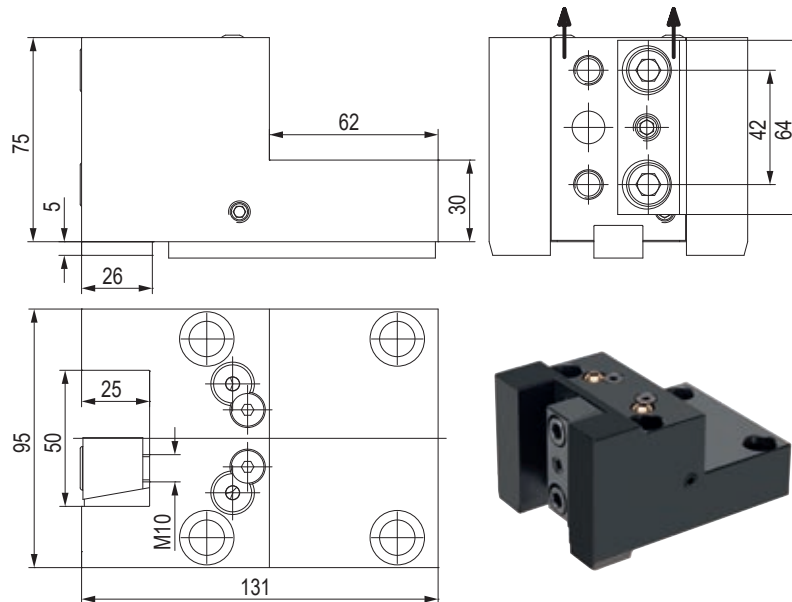


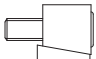

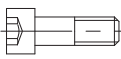
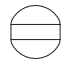
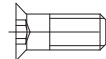


## CONNECTION

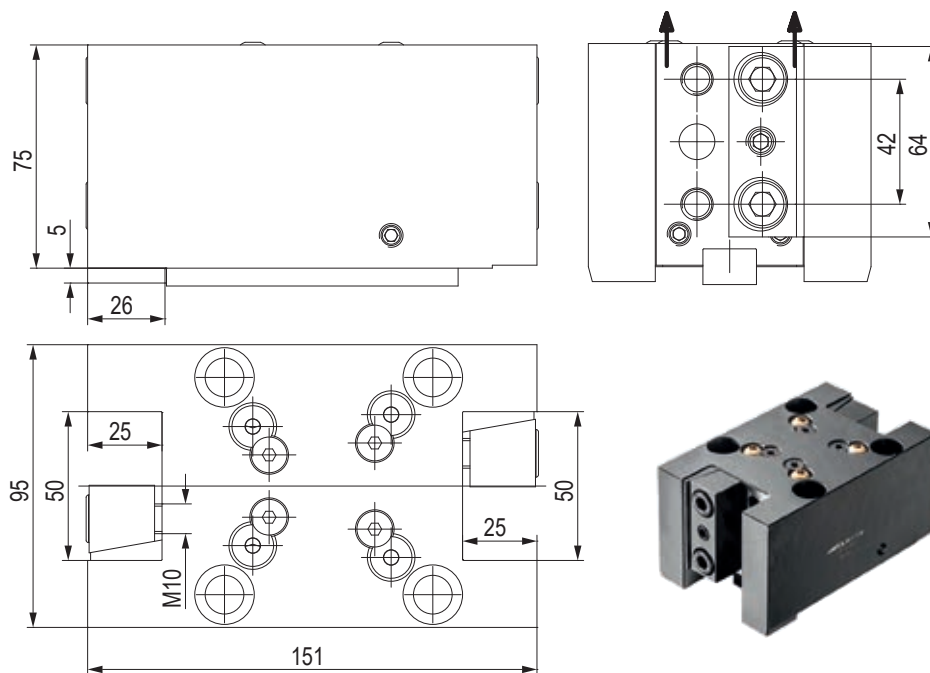


## PORTAUTENSILE RADIALE - RADIAL TOOLHOLDERS



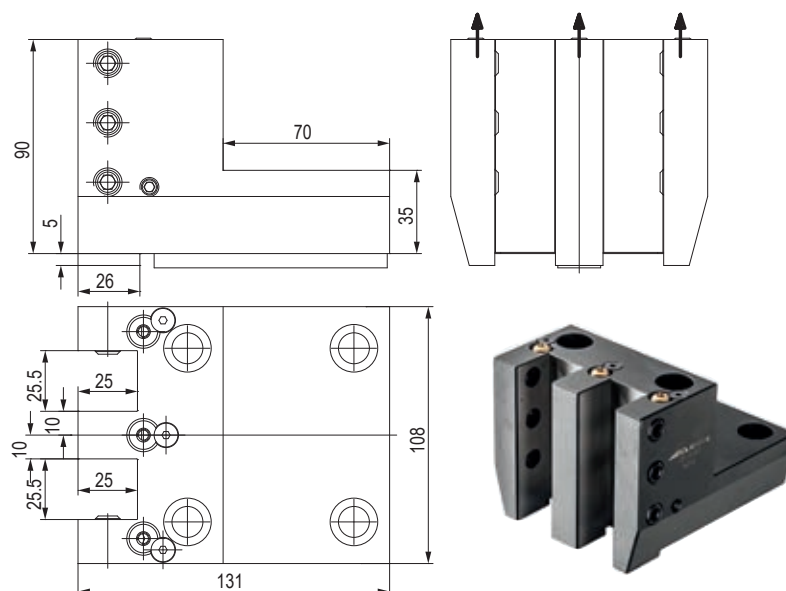
CODE N.	INTERNAL COOLANT	CLAMPING PLATE	KEY	SCREW FOR KEY	COOLANT BALL	SCREW FOR BALL
128-41801	NO					
128-41801-IC	YES	832-007360	814-203310	811-101027	833-001470	811-108018
		832-007360	814-203310	811-101027	833-001470	811-108018

## PORTAUTENSILE RADIALE - RADIAL TOOLHOLDERS



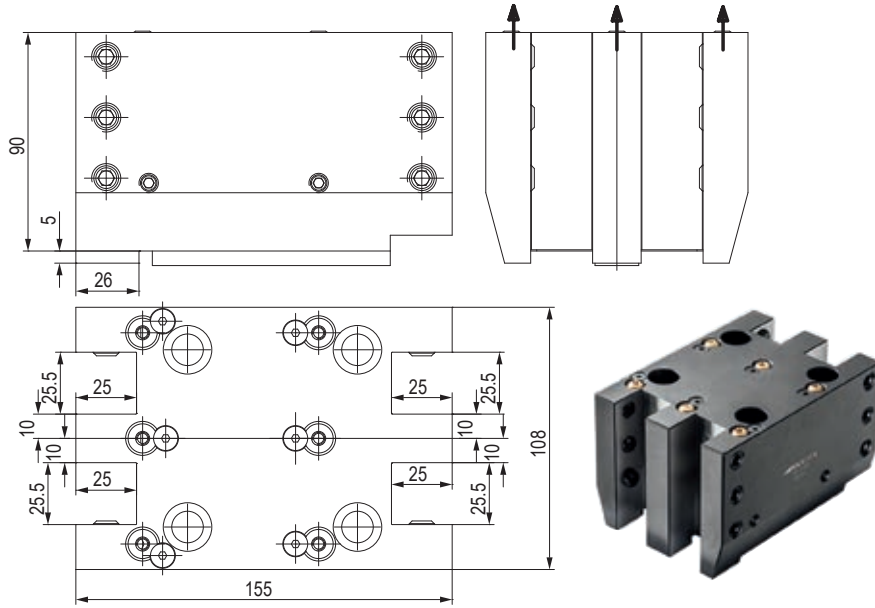
CODE N.	CLAMPING PLATE	KEY	SCREW FOR KEY	COOLANT BALL	SCREW FOR BALL
128-41802	832-007360	814-203310	811-101027	833-001470	811-108018

## PORTAUTENSILE RADIALE - RADIAL TOOLHOLDERS



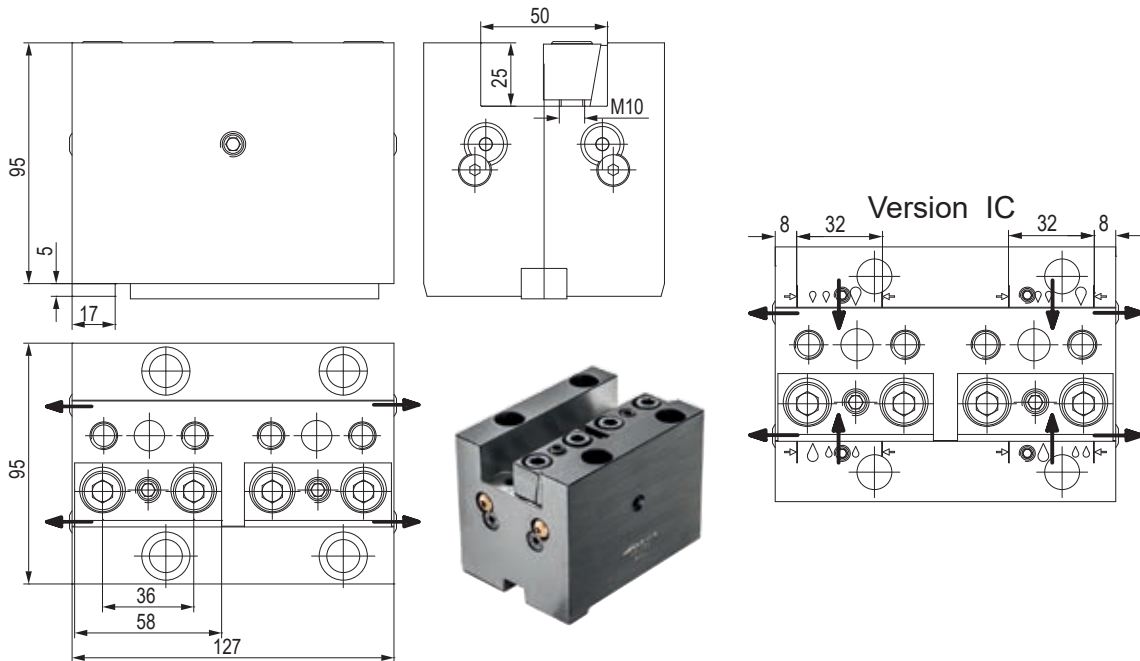
CODE N.	CLAMPING SCREW	KEY	SCREW FOR KEY	COOLANT BALL	SCREW FOR BALL
128-41803	811-102044	814-203310	811-101027	833-001410	811-108024

## PORTAUTENSILE RADIALE - RADIAL TOOLHOLDERS



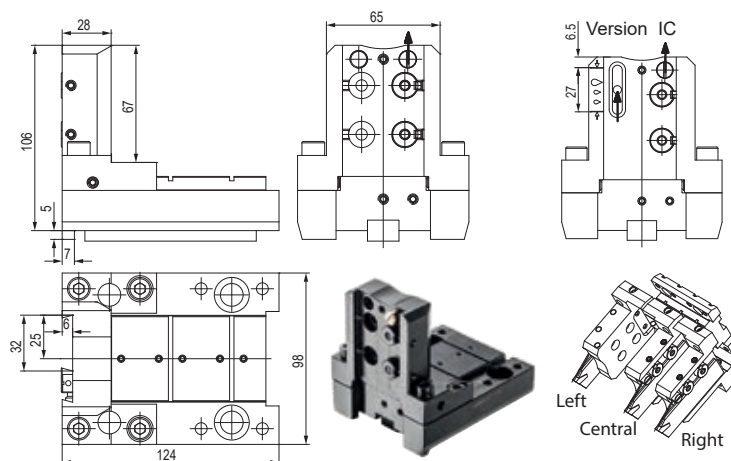
CODE N.	CLAMPING SCREW	KEY	SCREW FOR KEY	COOLANT BALL	SCREW FOR BALL
128-41804	811-102044	814-203310	811-101027	833-001410	811-108024

## PORTAUTENSILE ASSIALE - AXIAL TOOLHOLDERS



CODE N.	INTERNAL COOLANT	CLAMPING PLATE	KEY	SCREW FOR KEY	COOLANT BALL	SCREW FOR BALL
128-31802	NO	832-007570	814-203310	811-101027	833-001470	811-108018
128-31802-IC	YES	832-007570	814-203310	811-101027	833-001470	811-108018

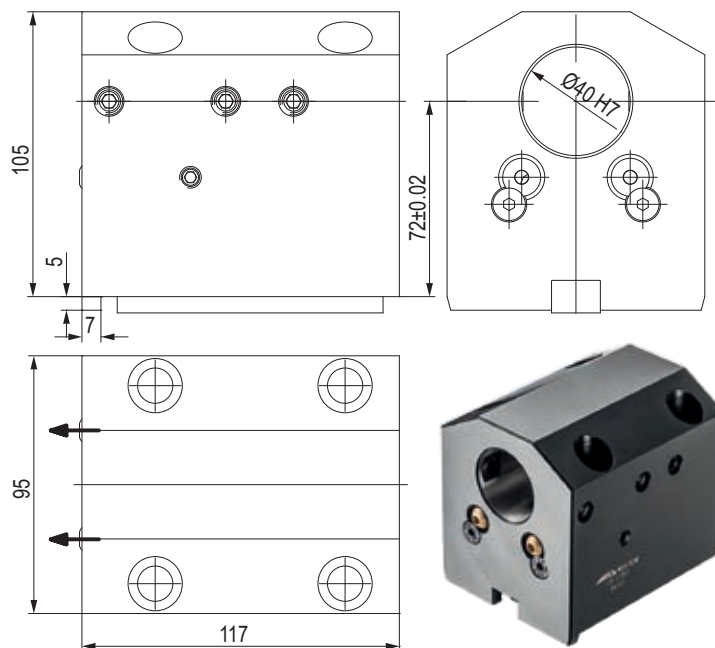
## PORTALAMA - CUT-OFF HOLDERS



CODE N.	INTERNAL COOLANT	KEY	SCREW FOR KEY	COOLANT NOZZLE	O RING FOR COOLANT NOZZLE	O RING FOR INT. COOLANT	O RING FOR BODY
128-11804	NO	814-203310	811-101026	833-001490	823-101058	-	823-101061
128-11804-IC	YES	814-203310	811-101026	833-001490	823-101058	823-201140	823-101061

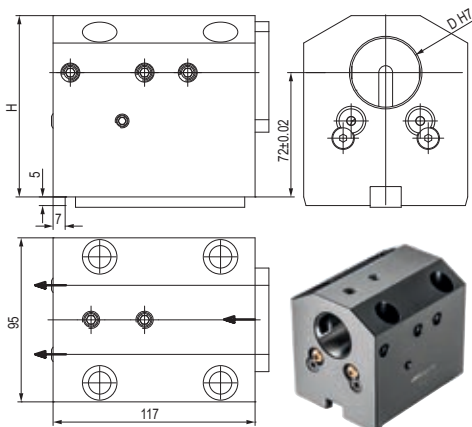
CODE N.	SHIM PLATE	SCREW FOR PLATE	CLAMPING PIN	SPRING	CLAMPING SCREW	SCREW
128-11804	832-014449	811-108037	832-014450	824-300012	811-101029	811-104013
128-11804-IC	832-014449	811-108037	832-014450	824-300012	811-101029	811-104013

## PORTAUTENSILE PER BARENI - TOOLHOLDER FOR BORING BAR



CODE N.	CLAMPING SCREW	KEY	SCREW FOR KEY	COOLANT BALL	SCREW FOR BALL
128-21801	811-102039	814-203310	811-101027	833-001470	811-108018

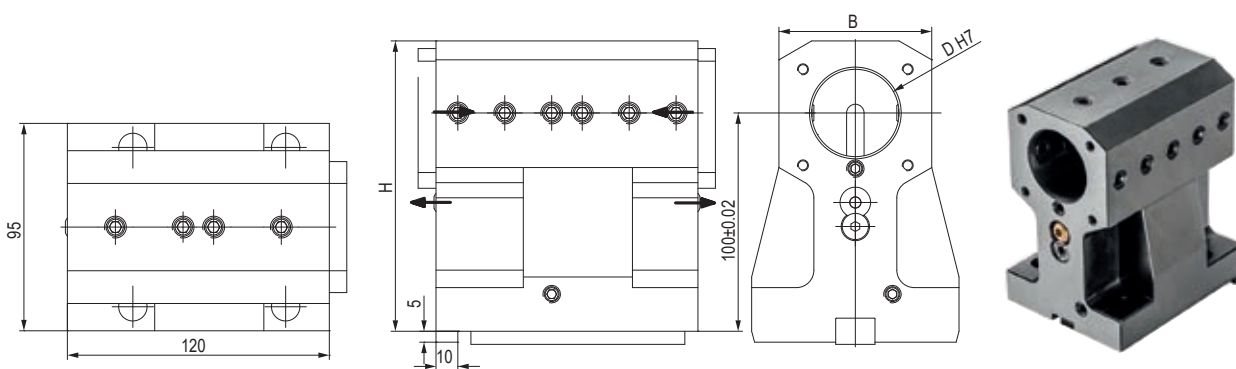
# PORTAUTENSILE COMBINATO PER BARENI E PUNTE A INSERTI COMBI TOOLHOLDER FOR BORING BAR AND INSERTDRILL



CODE N.	D	H	CLAMPING SCREW1 (M10X25 D40) - (M12X20 D50)	CLAMPING SCREW2 (M10X12 D40) - (M12X12 D50)	KEY	SCREW FOR KEY
128-21802	40	105	811-102039	811-102036	814-203310	811-101027
128-21805	50	109	811-102044	811-102064	814-203310	811-101027

CODE N.	COOLANT BALL	SCREW FOR BALL	COVER	SCREW FOR COVER
128-21802	833-001470	811-108018	832-003363	811-101016
128-21805	833-001470	811-108018	832-003369	811-101016

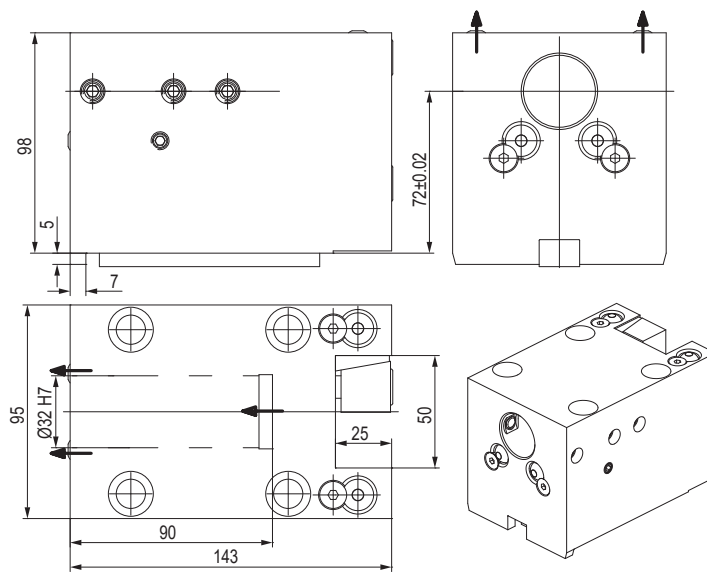
# PORTAUTENSILE COMBINATO PER BARENI E PUNTE A INSERTI COMBI TOOLHOLDER FOR BORING BAR AND INSERTDRILL



CODE N.	D	H	B	CLAMPING SCREW1 (M10X16 D40) - (M12X16 D50)	CLAMPING SCREW2 (M10X12 D40) - (M12X12 D50)	KEY	SCREW FOR KEY
128-21803	40	133	70	811-102037	811-102036	814-203310	811-101027
128-21806	50	137	80	811-102043	811-102064	814-203310	811-101027

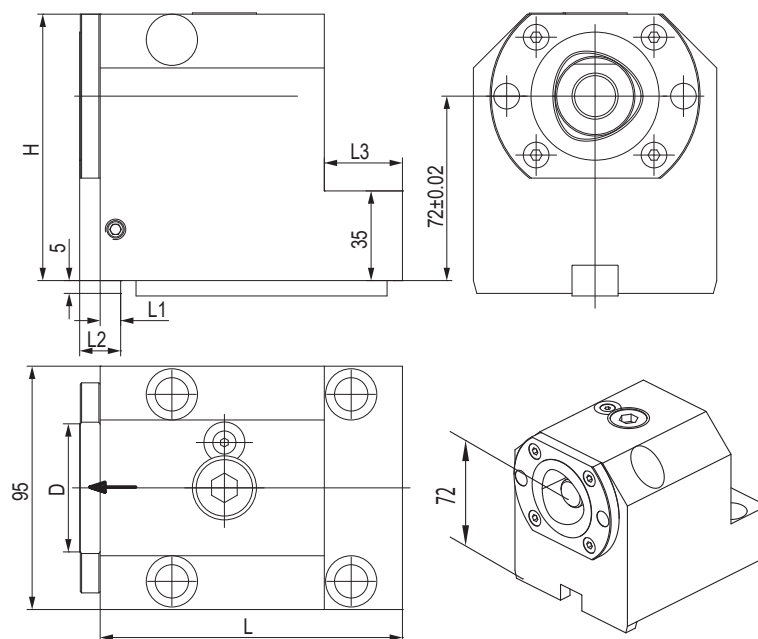
CODE N.	COOLANT BALL	SCREW FOR BALL	COVER	SCREW FOR COVER
128-21803	833-001470	811-108018	832-003363	811-101016
128-21806	833-001470	811-108018	832-003373	811-101016

# PORTAUTENSILE COMBINATO PER BARENI E UTENSILI PER ESTERNI COMBI TOOLHOLDER FOR BORING BAR AND EXTERNAL TOOLS



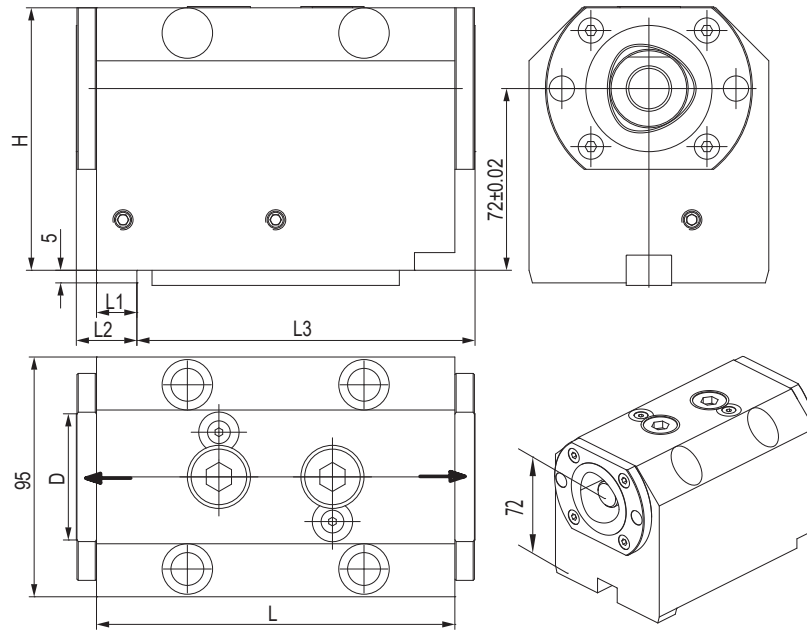
CODE N.	CLAMPING PLATE	CLAMPING SCREW COMP_2021-01	KEY COMP_2021-03	SCREW FOR KEY COMP_2021-04	COOLANT BALL COMP_2021-05	SCREW FOR BALL COMP_2021-06
128-11821	832-007360	811-102039	814-203310	811-101027	833-001470	811-108018

# PORTAUTENSILE CON USCITA POLIGONALE POLIGONAL TOOLHOLDERS



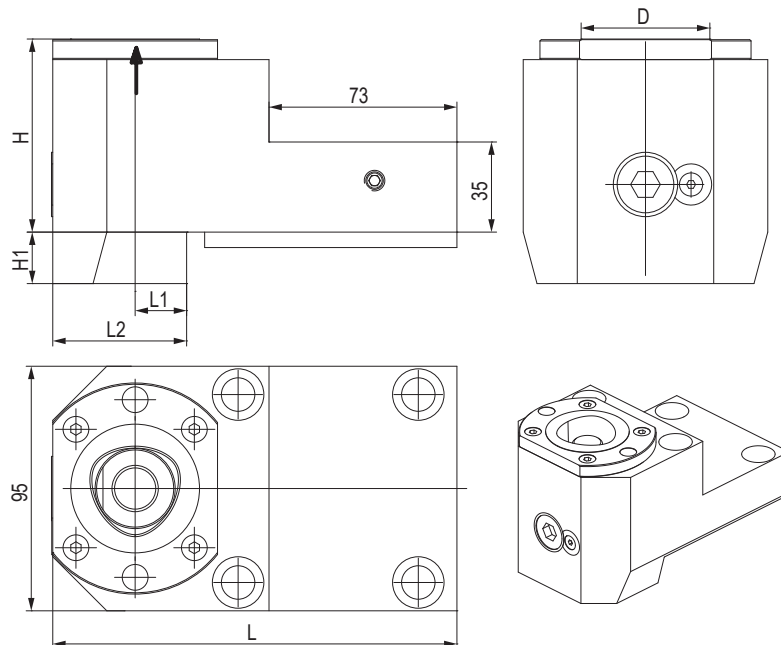
CODE N.	CAPTO	D	H	L	L1	L2	L3	CLAMPING UNIT	KEY	SCREW FOR KEY
128-11817	C40	40	96	116	6	12	38	CXC40-10	814-203310	811-101027
128-11805	C50	50	104	118	8	16	30,5	CXC50-10	814-203310	811-101027

## PORTAUTENSILE CON USCITA POLIGONALE POLIGONAL TOOLHOLDERS



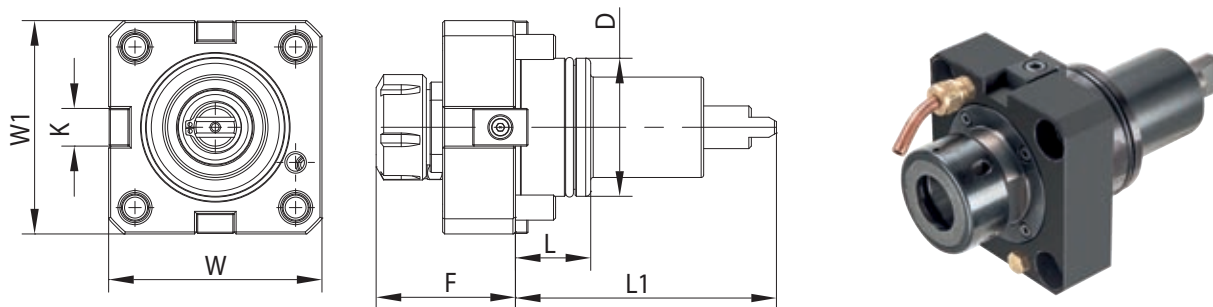
CODE N.	CAPTO	D	H	L	L1	L2	L3	CLAMPING UNIT	KEY	SCREW FOR KEY
128-11818	C40	40	96	123	13	19	116	CXC40-10	814-203310	811-101027
128-11807	C50	50	104	142	16	24	134	CXC50-10	814-203310	811-101027

## PORTAUTENSILE CON USCITA POLIGONALE POLIGONAL TOOLHOLDERS



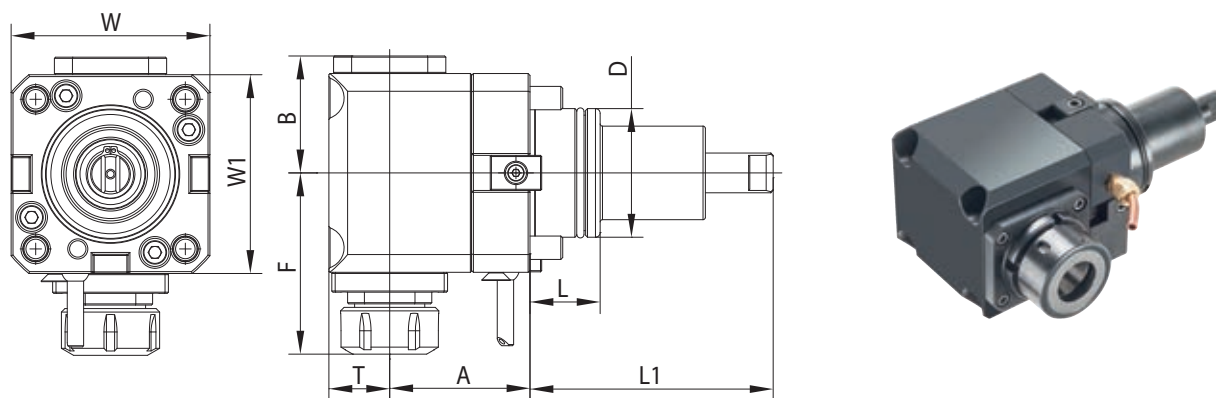
CODE N.	CAPTO	D	H	H1	L	L1	L2	CLAMPING UNIT	KEY	SCREW FOR KEY
128-11819	C40	40	70	13	141	12	36	CXC40-10	814-203310	811-101027
128-11809	C50	50	75	20	157	20	52	CXC50-10	814-203310	811-101027

## PORTAUTENSILE MOTORIZZATO ASSIALE STRAIGHT DRILLING AND MILLING HEAD



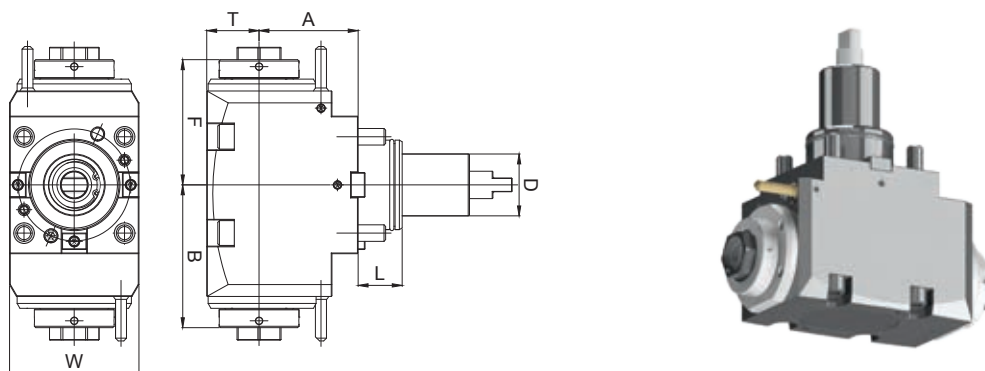
CODE N.	ER	D	F	K	L	L1	W	W1	MAX SPEED (Rpm)	I	MAX. TORQUE (Nm)	INTERNAL COOLING
124-06501	ER32	65	75	18	32	112	94	94	6000	1:1	70	no
124-06508	ER32	65	75	18	32	112	94	94	6000	1:1	70	yes

## PORTAUTENSILE MOTORIZZATO RADIALE RADIAL DRILLING AND MILLING HEAD



CODE N.	ER	D	A	B	F	L	L1	T	W	W1	MAX SPEED (Rpm)	I	MAX. TORQUE (Nm)	INTERNAL COOLING	P BAR
124-06502	ER32	65	72	59	110	32	112	36	94	94	6000	1:1	40	no	-
124-06512	ER32	65	72	59	110	32	110	38	94	94	6000	1:1	40	yes	20
124-06521	ER32	65	72	59	110	32	110	38	94	94	6000	1:1	40	yes	80

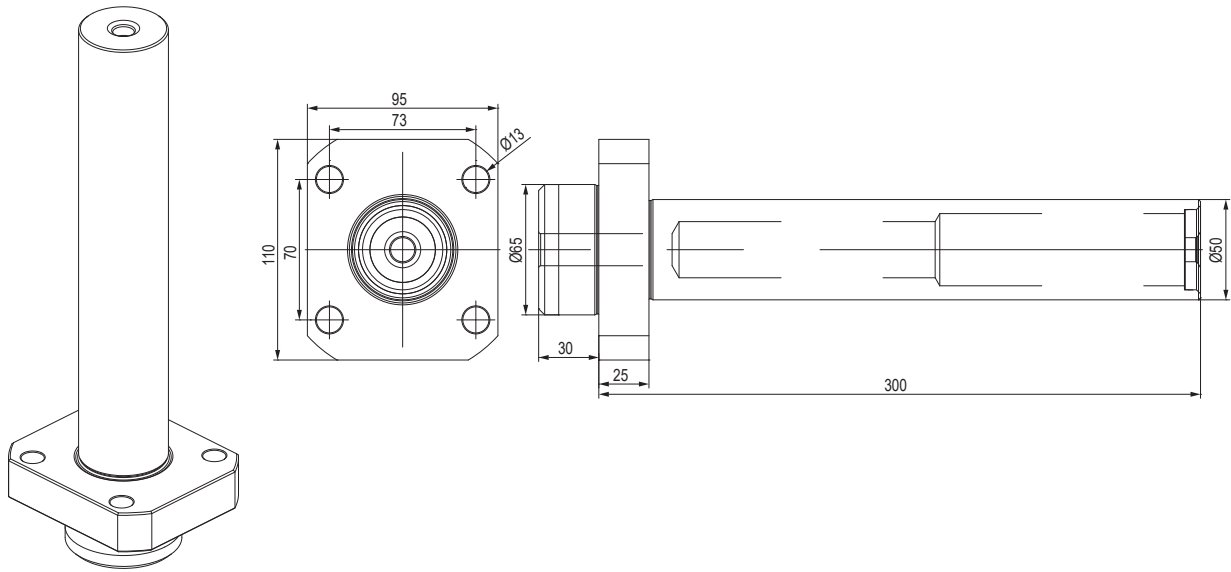
## PORTAUTENSILE MOTORIZZATO RADIALE DOPPIO DOUBLE RADIAL DRILLING AND MILLING HEAD



CODE N.	D	ER	INTERNAL COOLING	DIRECTION	A	B	F	T	W	L	TORQUE (Nm)	Nmax (rpm)	RATIO	P (bar)
124-06605	65	32	no	right/left	72	103.8	91	38	94	32	70	6000	1:1	-
124-06606	65	32	yes	right/left	72	103.8	91	38	94	32	70	6000	1:1	20



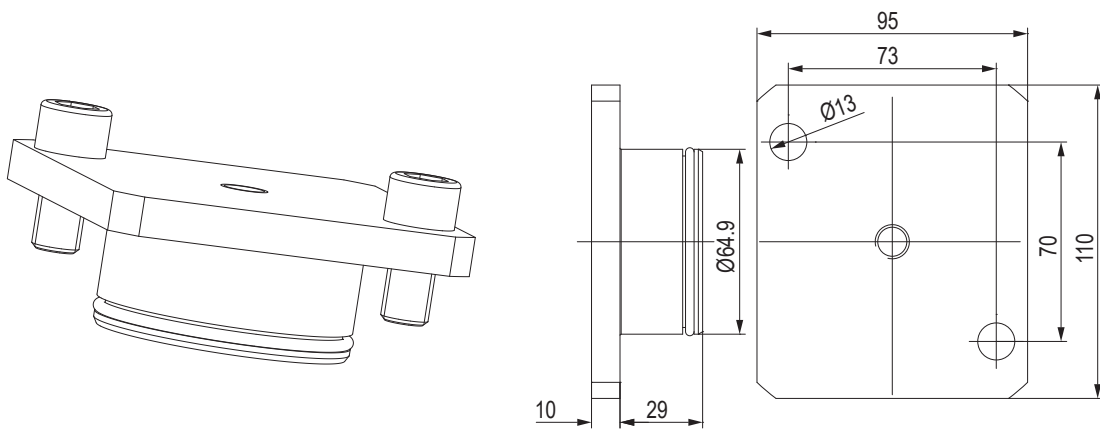
## BARRA DI CONTROLLO - CONTROL PIN



CODE N.

137-00199

## TAPPO DI PROTEZIONE - PROTECTION COVER



CODE N.

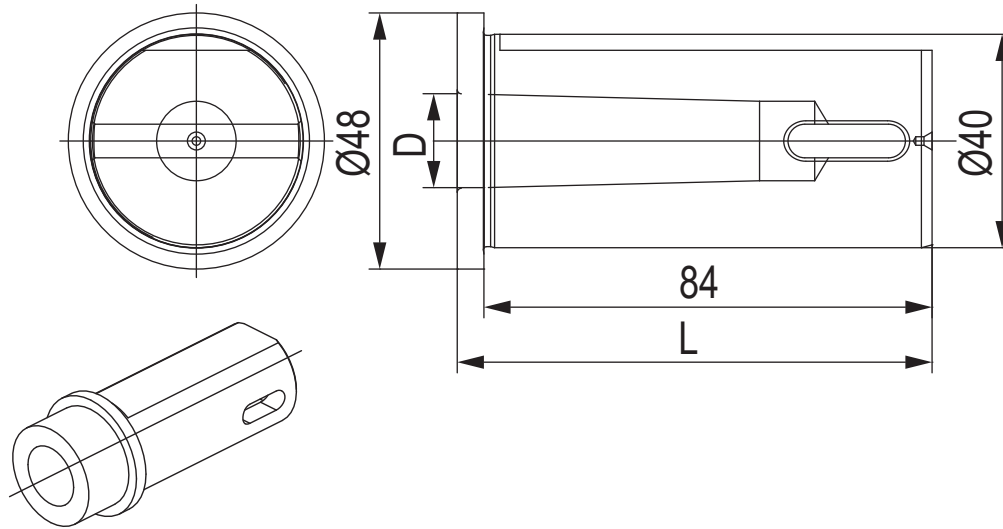
O RING



137-00254

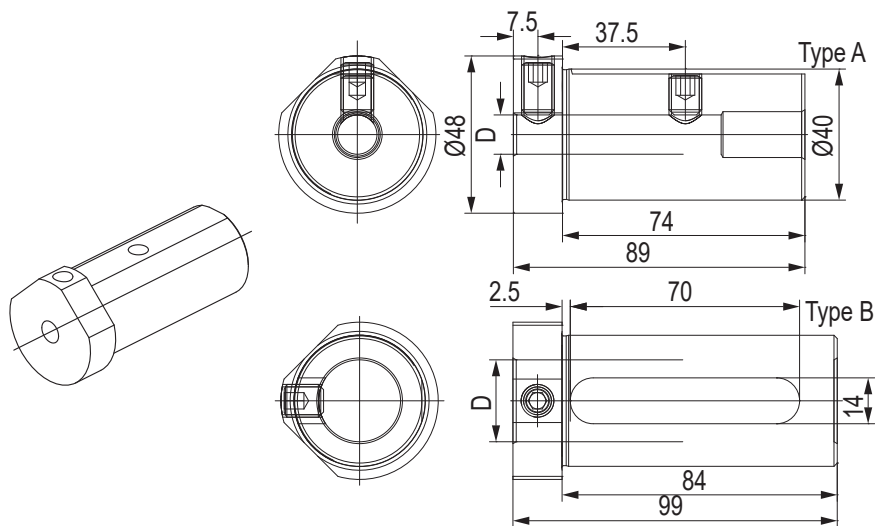
823-101084

## BUSSOLA PER PORTABARENO DRILL SOCKET FOR TOOLHOLDER



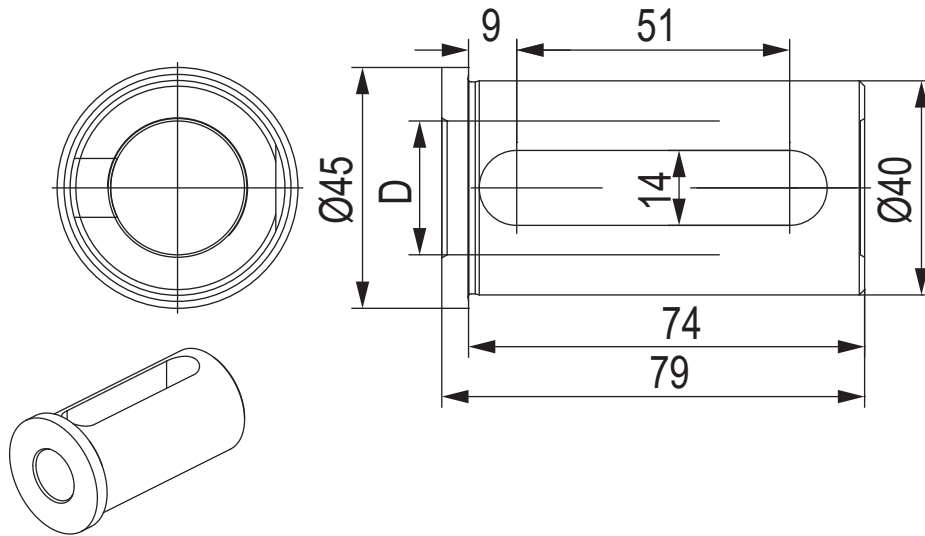
CODE N.	Ø	MORSE	D	L
114-34012	40	1	12,065	89
114-34013	40	2	17,780	89
114-34014	40	3	23,825	110

## BUSSOLA PER PORTABARENO DRILL SOCKET FOR TOOLHOLDER



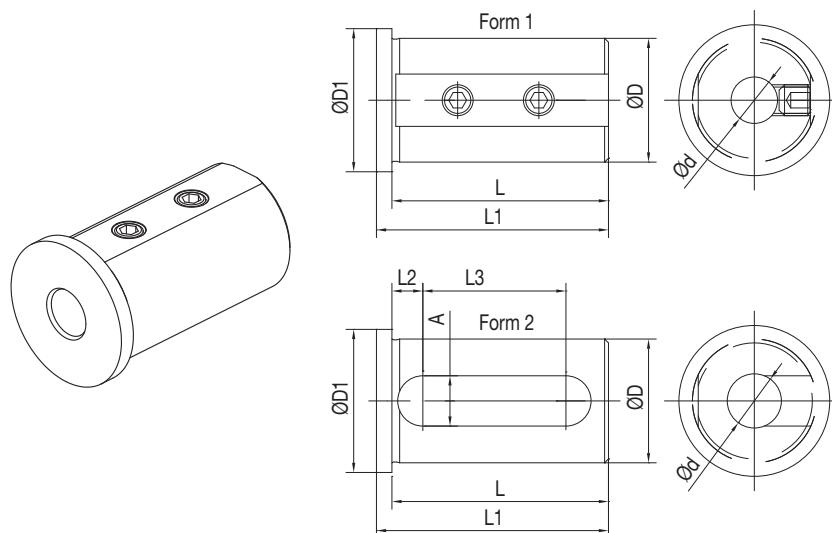
CODE N.	Ø	D	TYPE	SCREW1	SCREW2
165-64089	40	10	A	811-102037	811-102036
165-64090	40	12	A	811-102037	811-102036
165-64091	40	16	A	811-102037	811-102036
165-64092	40	20	B	811-102036	-
165-64093	40	25	B	811-102036	-
165-64094	40	32	B	811-102035	-

## BUSSOLA PER PORTABARENO DRILL SOCKET FOR TOOLHOLDER



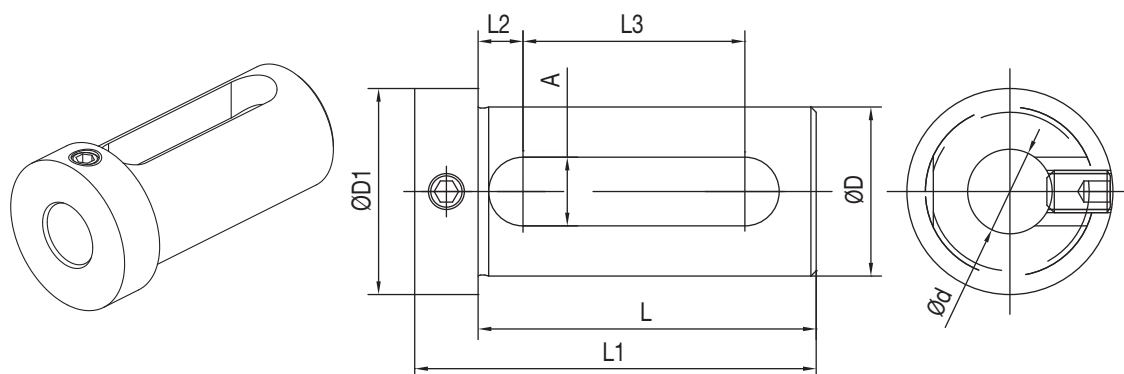
CODE N.	Ø	D
165-64095	40	20
165-64096	40	25
165-64097	40	32

## BUSSOLA PER PORTABARENO BORING BAR SLEEVE FOR TOOLHOLDER



CODE N.	D	D	FORM	L	L1	L2	L3	A	D1
165-64247	40	8	1	71	75	-	-	-	45
165-64248	40	10	1	71	75	-	-	-	45
165-64249	40	12	1	71	75	-	-	-	45
165-64251	40	16	2	71	75	8	52	13	45
165-64253	40	20	2	71	75	8	52	13	45
165-64254	40	25	2	71	75	8	52	13	45
165-64255	40	32	2	71	75	8	52	13	45

## BUSSOLA PER PORTABARENI BORING BAR SLEEVE FOR TOOLHOLDER



CODE N.	D	D	L	L1	L2	L3	A	D1
165-64241	40	16	74	88	9	51	14	48
165-64243	40	20	74	88	9	51	14	48
165-64244	40	25	74	88	9	51	14	48
165-64245	40	32	74	88	9	51	14	48
165-65017	50	25	84	98	9	61	14	59
165-65018	50	32	84	98	9	61	14	59
165-65019	50	40	84	98	9	61	14	59

RELIABLE AND PROMPT DELIVERIES ALL OVER THE WORLD  
through express couriers

# KINTEK®



NEW PRODUCTION PLANT  
A.M.T S.R.L. - CASELLE T.SE - TORINO - ITALY



HEAD OFFICE  
KINTEK S.R.L. - MAPPANO - TORINO - ITALY



MAIN PRODUCTION PLANT  
KINTEK TOOLING KFT - BEKESCSABA - HUNGARY

## **KINTEK s.r.l.**

Via Goretta 88/G - 10079 MAPPANO - (TO) - ITALY  
Tel. +39 011 99 68 065 - Fax +39 011 99 65 662

e-mail: [info@kintek.it](mailto:info@kintek.it)  
<http://www.kintek.it>