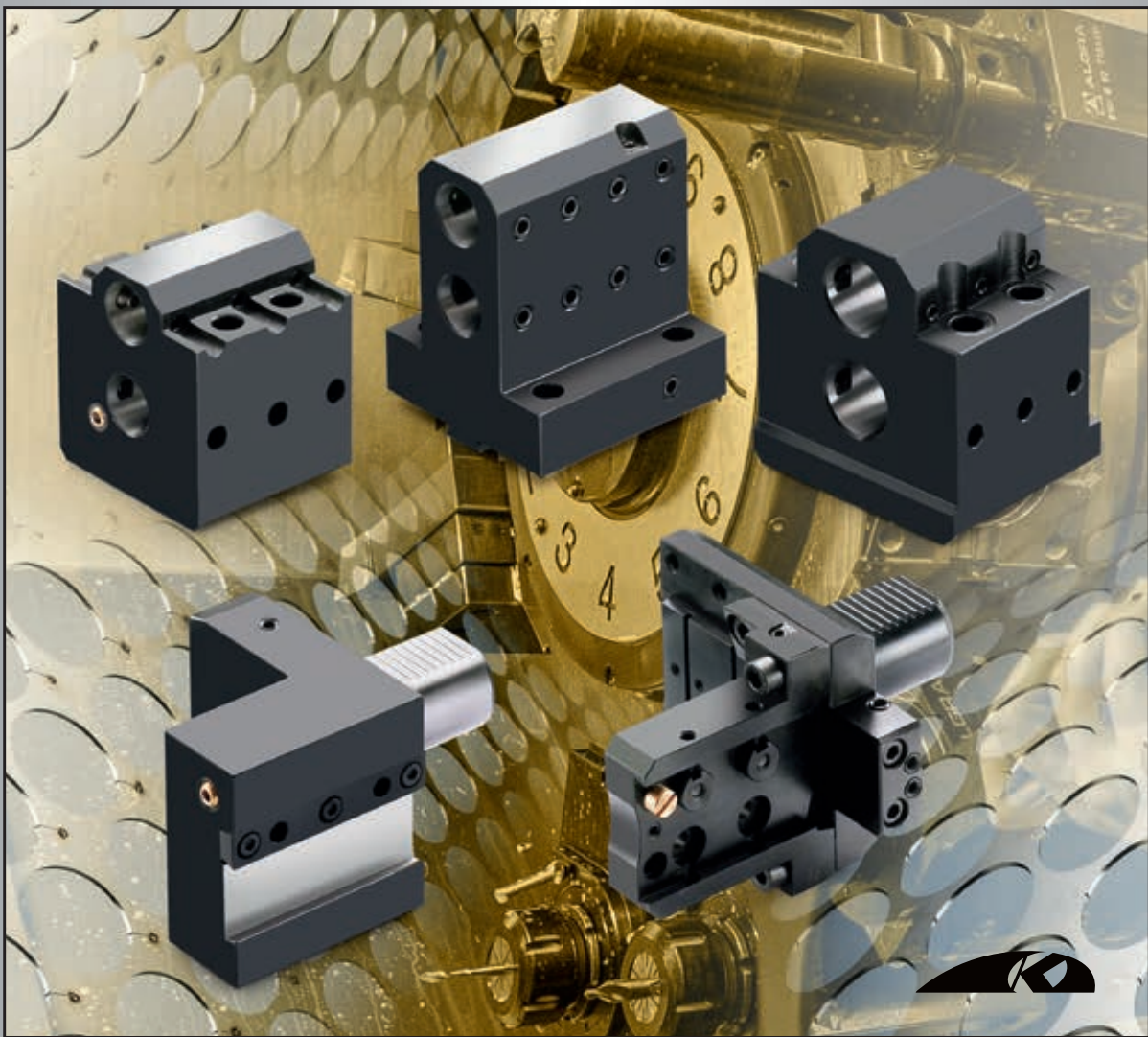




KINTEK®

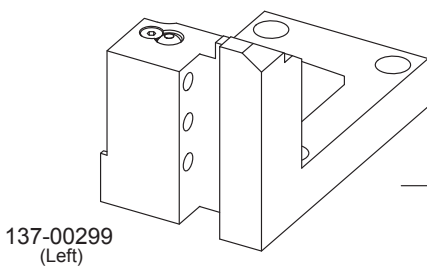
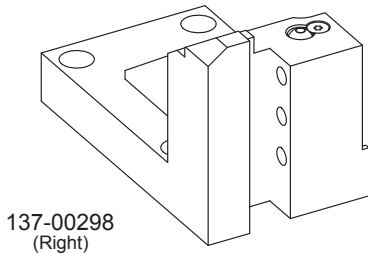
COMPONENTI INNOVATIVI TECNOMECCANICI



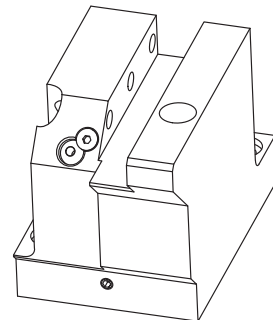
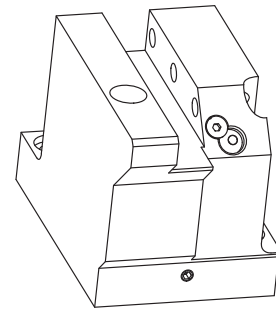
TOOLHOLDERS FOR CNC LATHES
MURATA/MURATEC
MW120 / MW200

MURATA MURATEC MW120

MW120 8ST
MS60 8ST
MJ60 8ST



Qualified tool
20x20 mm

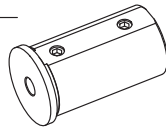
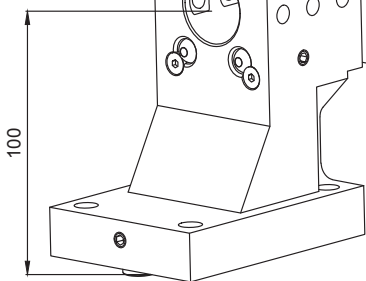


ACCESSORIES

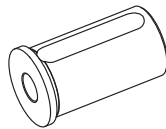
Combi toolholder
for boring bar
and insertdrill
Ø40

Cover
832-003402

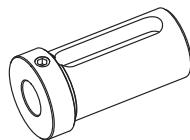
137-00300



165-64247(Ø8 mm)
165-64248(Ø10 mm)
165-64249(Ø12 mm)

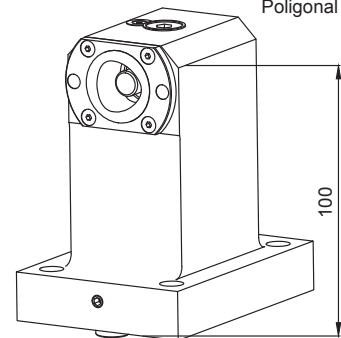


165-64251(Ø16 mm)
165-64253(Ø20 mm)
165-64254(Ø25 mm)
165-64255(Ø32 mm)



165-64241(Ø16 mm)
165-64243(Ø20 mm)
165-64244(Ø25 mm)
165-64245(Ø32 mm)

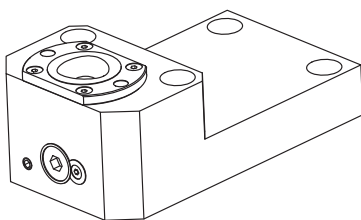
Boring bar holder
Polygonal



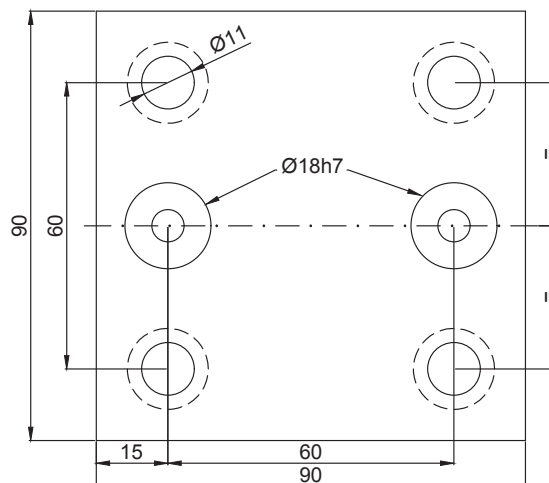
137-00263 (C40)
137-00313 (C50)

CONNECTION

Cutting holder
Polygonal

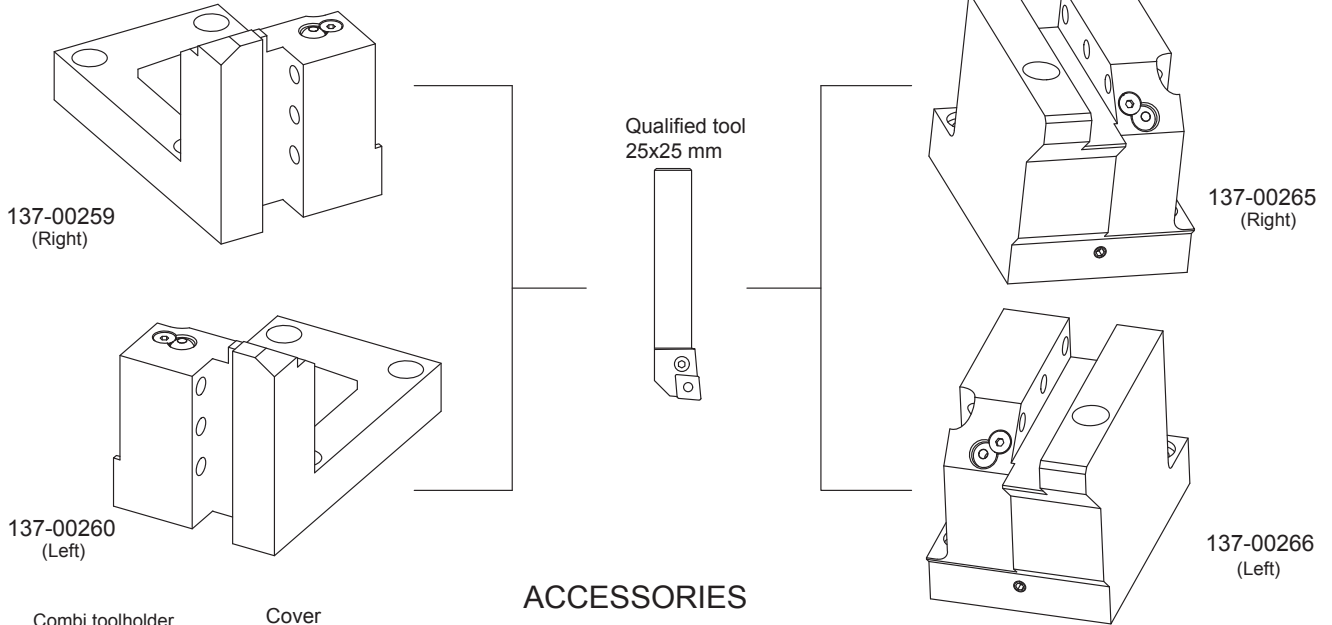


137-00262 (C40)
137-00314 (C50)

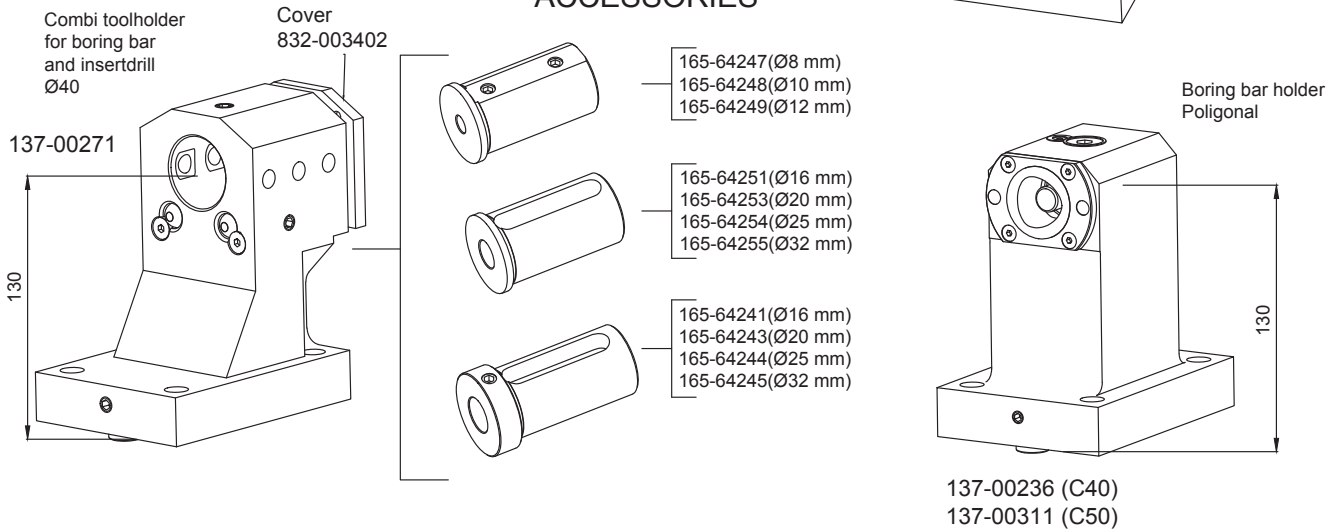


MURATA MURATEC MW200

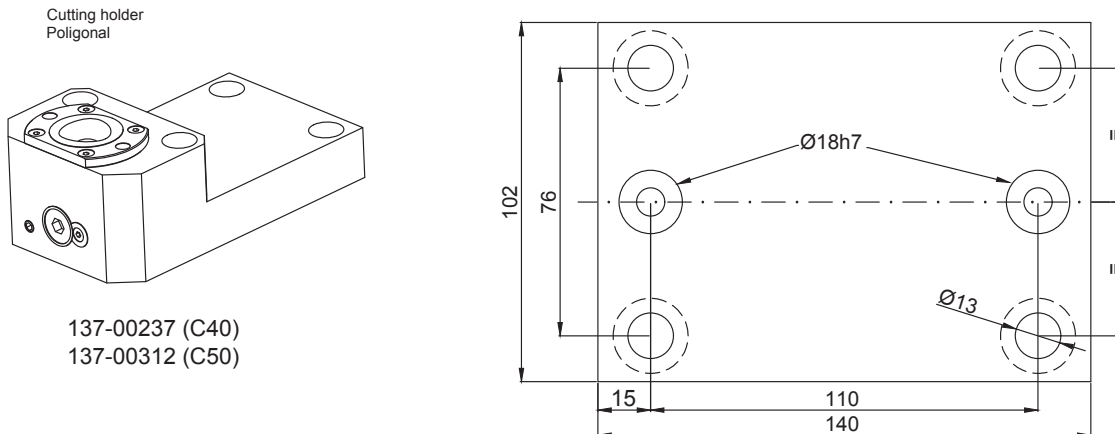
MW200 10ST
MW180 10ST
MS100 10ST
MS90 10ST
MJ100 10ST



ACCESSORIES



CONNECTION



KINTEK®



NEW PRODUCTION PLANT
A.M.T S.R.L. - CASELLE T.SE - TORINO - ITALY



HEAD OFFICE
KINTEK S.R.L. - MAPPANO - TORINO - ITALY



MAIN PRODUCTION PLANT
KINTEK TOOLING KFT - BEKESCSABA - HUNGARY

KINTEK s.r.l.

Via Goretta 88/G - 10079 MAPPANO - (TO) - ITALY
Tel. +39 011 99 68 065 - Fax +39 011 99 65 662
e-mail: info@kintek.it
<http://www.kintek.it>