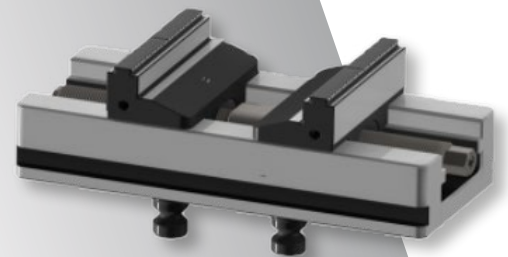


## 5-Axis Centring Vices

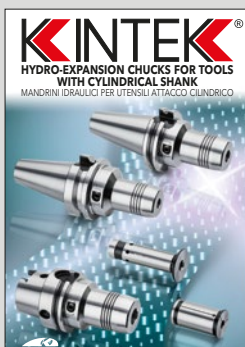
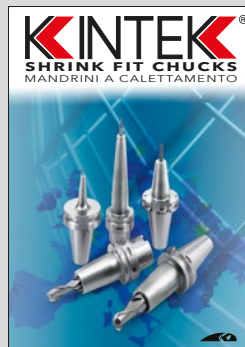
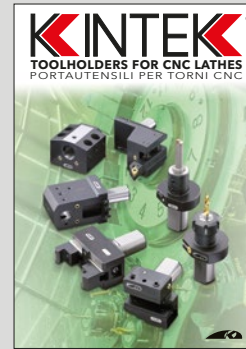
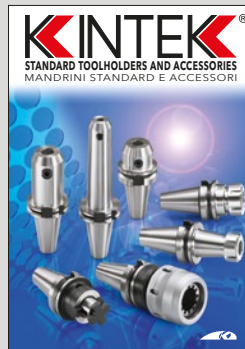
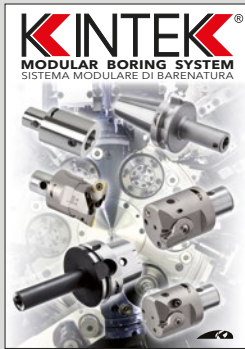
## Zero **K**lamp System

## Precision CNC Vices



**KINTEK**<sup>®</sup> | **Gait**<sup>®</sup>

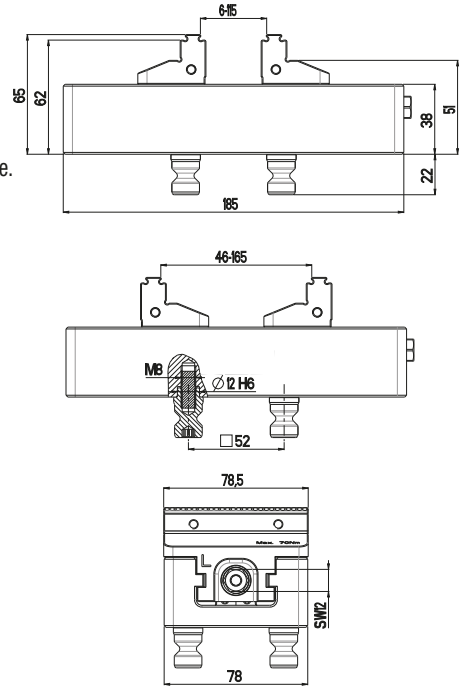
Together We brand **Quality!**



## MRC78



\* Usable on Zero Klamp with 52 hole distance.  
- Without side rails



Supplied with 5 mm allen key and centring pins (4 pcs)

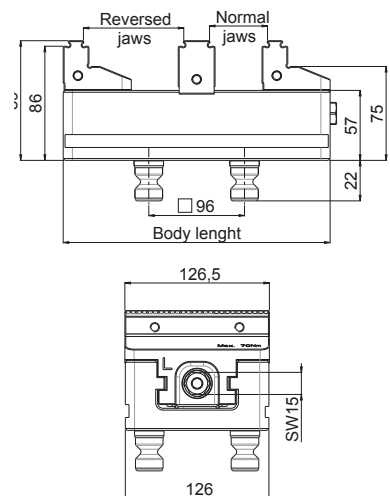


Ident-no	MRC78X110	MRC 78X145	MRC78X185
Jaw width (mm)	78.5	78.5	78.5
Body length (mm)	110	145	185
Clamping range normal/reversed jaw (mm)	0-90	0-125	0-165
Zero point clamping system	52	52	52
Zero point bolt diameter	Ø16	Ø16	Ø16
Max tightening torque (Nm)	70	70	70
Clamping force (kN)	14	14	14
Centring accuracy (mm)	±0,02	±0,02	±0,02

## MRC126



\* Usable on Zero Klamp with 96 hole distance.  
\* With side rails, suitable also for clamping without Zero Klamp.



Supplied with 5 mm allen key and centring pins (4 pcs)



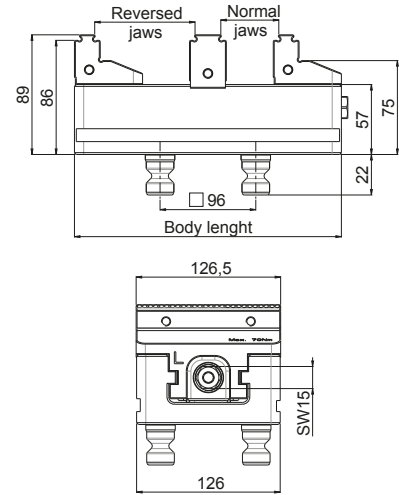
Ident-no	MRC126X180	MRC126X230	MRC126X280
Jaw width (mm)	126	126	126
Body length (mm)	180	230	280
Clamping range normal/reversed jaw (mm)	0-155	0-205	0-255
Zero point clamping system	96	96	96
Zero point bolt diameter	Ø20	Ø20	Ø20
Max tightening torque (Nm)	100	100	100
Clamping force (kN)	20	20	20
Centring accuracy (mm)	±0,02	±0,02	±0,02

## MRCD126



\* Usable on Zero Klamp with 96 hole distance  
 \*With side rails, suitable also for clamping without Zero Klamp.

Supplied with 5 mm allen key and centring pins (4 pcs)



Ident-no	MRCD126X180	MRCD126X230	MRCD126X280
Jaw width (mm)	126.5	126.5	126.5
Body length (mm)	180	230	280
Clamping rage normal/reversed jaw(mm)	0-38/38-68	0-60/38-95	0-85/38-120
Zero point clamping system	96	96	96
Zero point bold diameter	Ø20	Ø20	Ø20
Max tightening torque (Nm)	100	100	100
Clamping force (kN)	20	20	20
Centring accuracy (mm)	±0,02	±0,02	±0,02

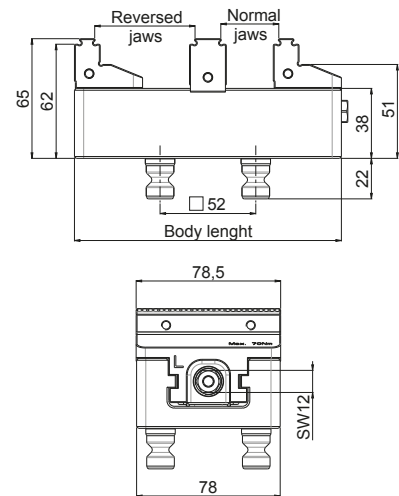
04

## MRCD78



\* Usable on Zero Klamp with 52 hole distance.  
 \* Without side rails

Supplied with 5 mm allen key and centring pins (4 pcs)



Ident-no	MRCD78X110	MRCD78X145	MRCD78X185
Jaw width (mm)	78.5	78.5	78.5
Body length (mm)	110	145	185
Clamping rage normal/reversed jaw(mm)	0-15/30-38	0-32/30-55	0-52/30-75
Zero point clamping system	52	52	52
Zero point bold diameter	Ø16	Ø16	Ø16
Max tightening torque (Nm)	70	70	70
Clamping force (kN)	14	14	14
Centring accuracy (mm)	±0,02	±0,02	±0,02

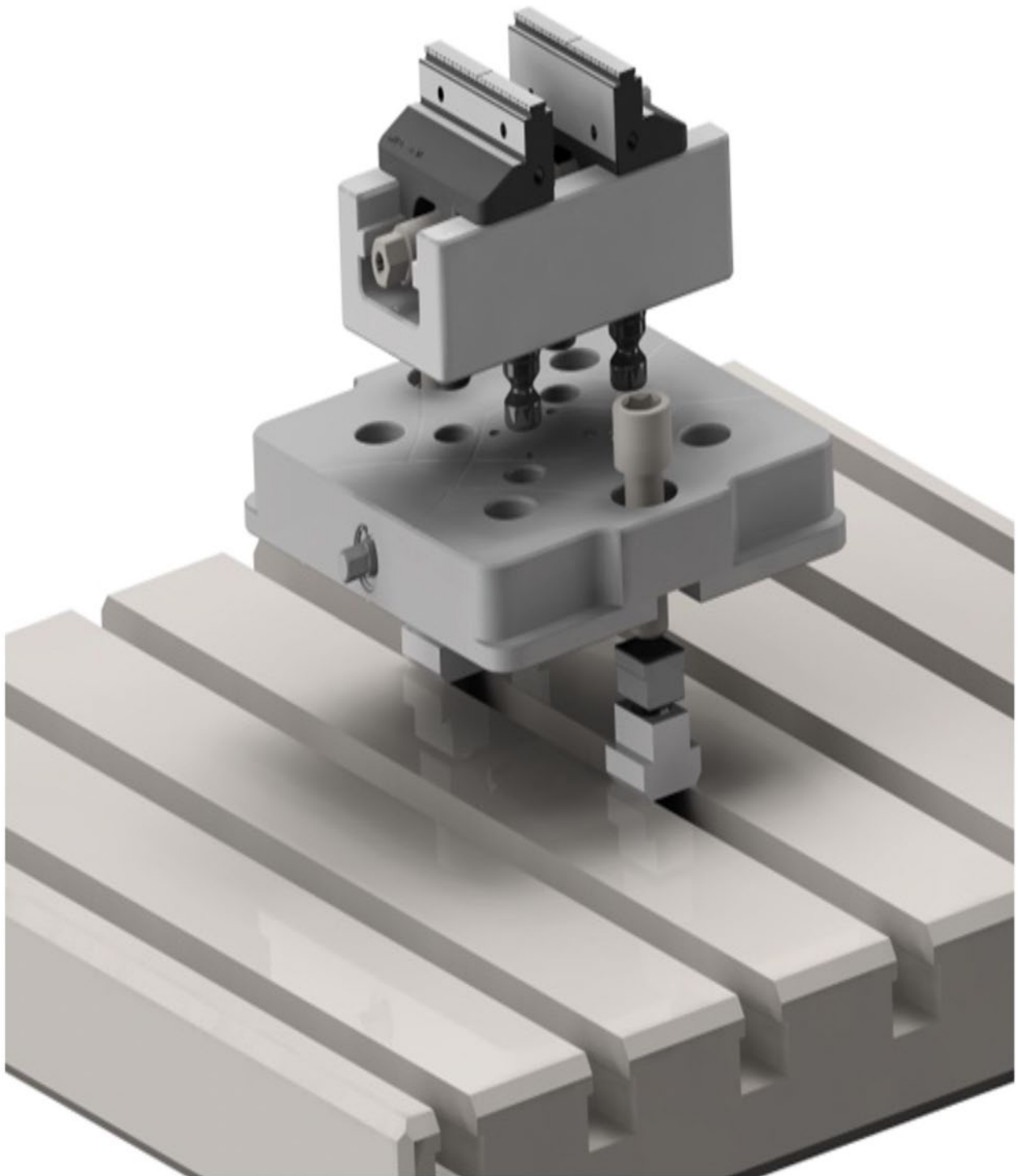
# MRC ACCESSORIES



- Accessories for flexible clamping
- Adaptation of customer's own device or fixtures on the base jaws
- Positioning is done by dovetail geometry
- Soft jaws available in aluminium or steel
- Can be used for pre-machined, round or profiled parts
- Quick soft jaw exchange with only one screw
- Low cost soft jaws can be purchased or can be machined in-house

<b>JAWS BASE</b>	<b>JBAS78</b>	<b>JBAS126</b>	Case Hardened 55HRC
For Body mm	78	126	
to combin with	<b>JALU78</b>	<b>JALU126</b>	Soft Jaws Aluminium (EN AW 5083)
	<b>JSTEEL78</b>	<b>JSTEEL126</b>	Soft Jaws Steel (1.7139)

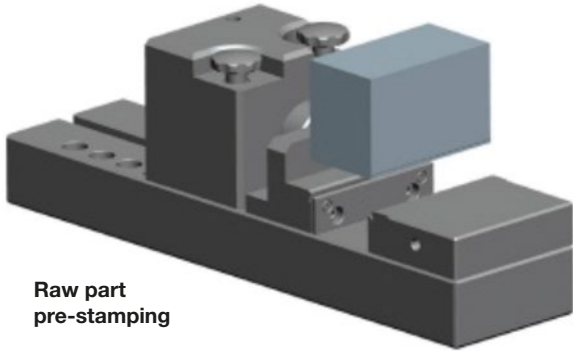
# MRC+ZERO KAPPLICATIONS



## **MATERIAL**

MRC – MRCD – ZERO-KLAMP PLATE: 16MnCr5 / 1.7131 steel (case hardened)

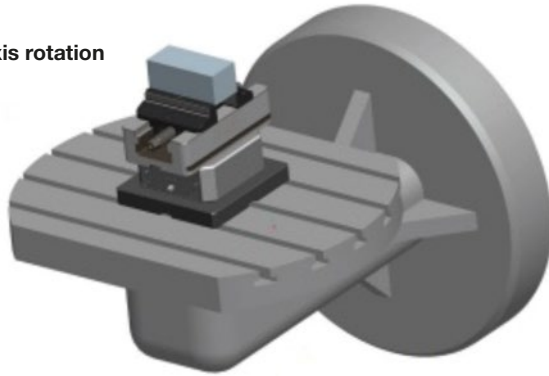
MRF: GGG60 nodular cast iron (inductive hardened on the guides)



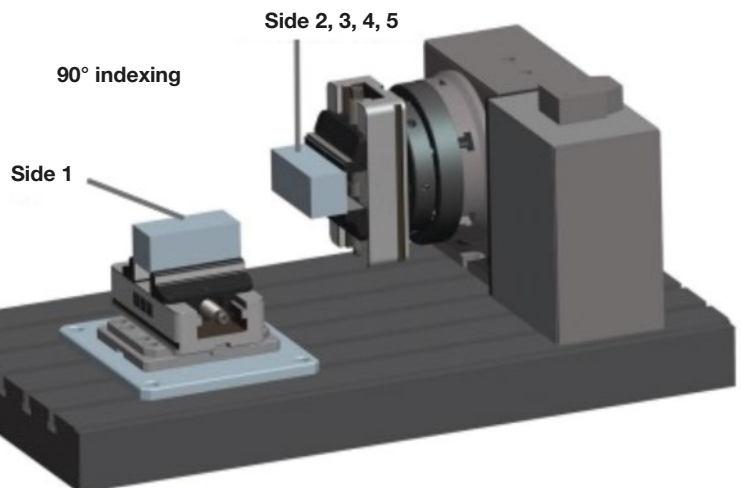
Raw part  
pre-stamping

Pre-stamp the raw part for a better grip in the vice and then use your machine configuration to your own advantage with this simple to use and reliable type of centring

C axis rotation



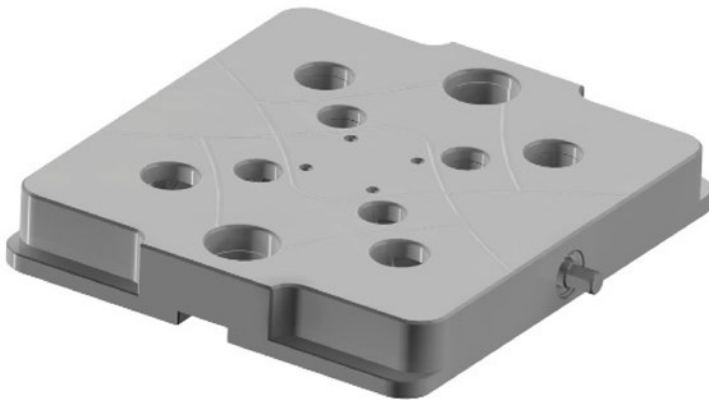
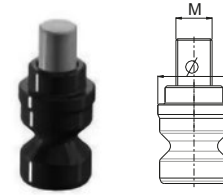
B axis rotation



Depending on how many axis are available on the milling center you can machine 5 out of 6 sides of the part with maximum one changeover of the vice.

## ZERO KLAMP

### Centring Pins (Spare parts)



CODE	KCP16	KCP20
Thread	M8	M10
Diameter	Ø 16	Ø 20
For System	52	96

08

Supplied with 8mm Socket Wrench key



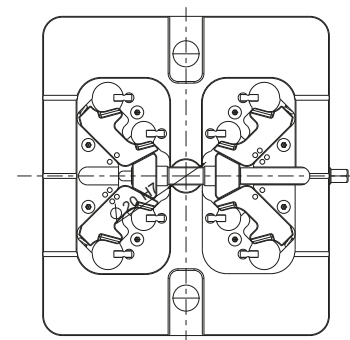
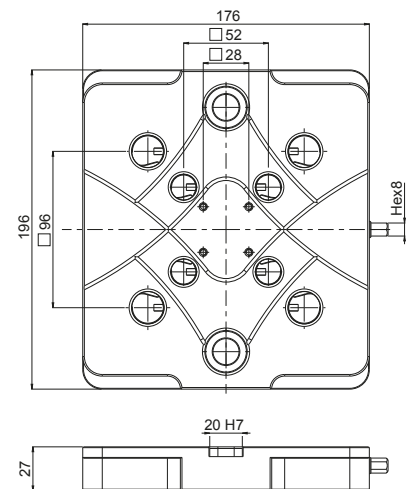
And mounting Kits MSPS and MSPC



MSPS



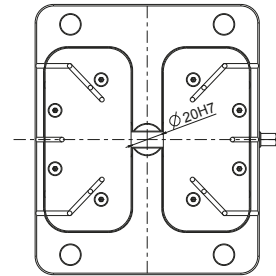
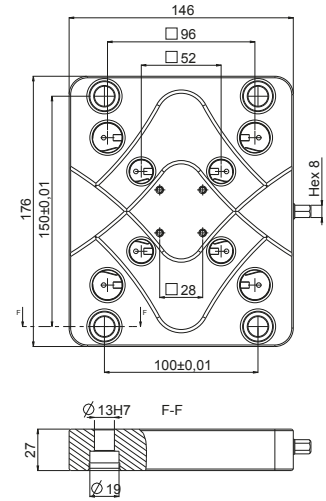
MSPC



Ident-no	ZK1-196X176
Dimensions (mm)	196x176x27
Zero point system (mm)	96 / 52
Zero point bolts (mm)	Ø 20 / 16
Suitable vice	126 / 78
Max. tightening torque (Nm)	45
Holding force (kN)	60
Accuracy (mm)	0,005
Mounting kit	MKS / MKC

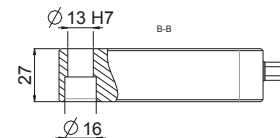
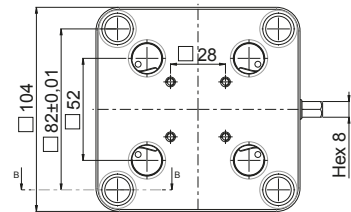


## ZERO KLAMP



**ZK2**

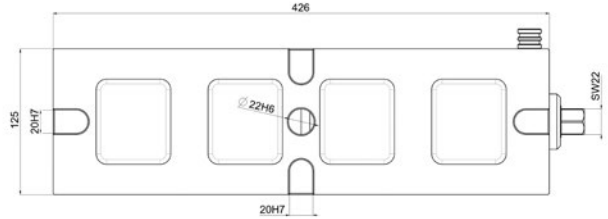
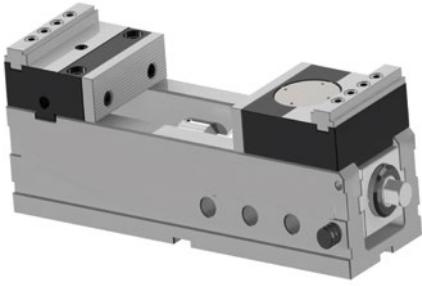
Mounting Kits for ZK2 and ZK3 included (Bushing MSPB + 8mm Socket Wrench key):



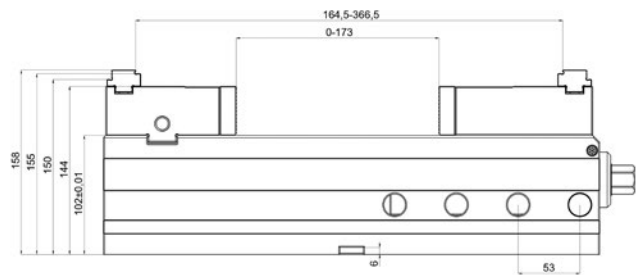
**ZK3**

Ident-no	ZK2-176X146	ZK3-104X104
Dimensions (mm)	176x146x27	104x104x27
Zero point system (mm)	96 / 52	52
Zero point bolts (mm)	Ø 20 / 16	Ø 16
Suitable vice	126 / 78	78
Max. tightening torque (Nm)	45	45
Holding force (kN)	60	60
Accuracy (mm)	0,005	0,005
Mounting kit	MKB	MKB

## MRF125



Supplied with MRF125: Mounting KIT, 1/2" torque wrench, 1/2" extension and 22mm socket key



Ident-no	MRF125X428
Jaw width (mm)	125
Body length (mm)	428
Clamping range	0-355
Max tightening torque (Nm)	200
Clamping force (kN)	40

## JAWS FOR MRF125

JRF 125.1 - Plain Jaw



JRF 125.5 - Double Serrated Jaw



JRF 125.2 - Stepped Plain Jaw



JRF 125.6 - Reversible Jaw



JRF 125.3 - Claw Jaws



JRF 125.7 - Prismatic Jaw

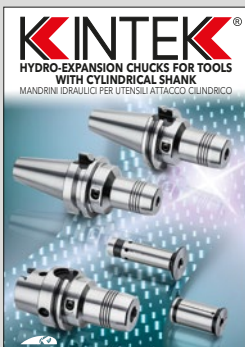
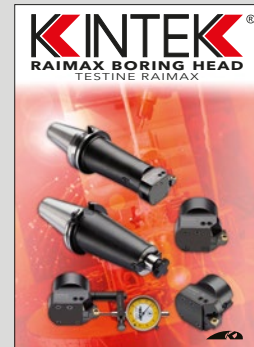
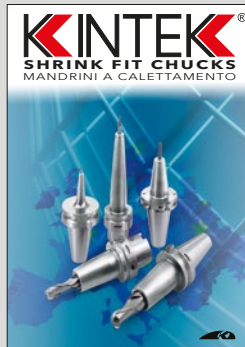
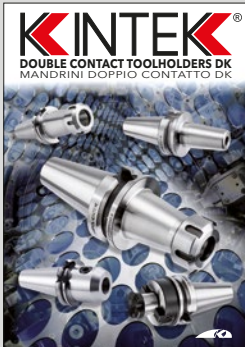
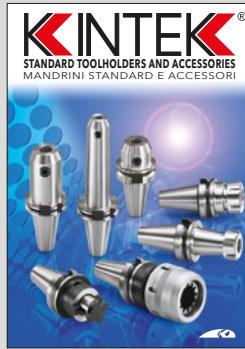
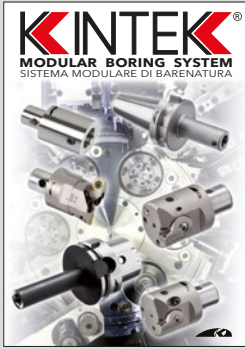


JRF 125.4 - Serrated Jaw



JRF 125.8 - Pull Down Jaw







**Production Plant Italy**  
Kintek S.R.L.  
Mappano - Torino  
Italy



**Head Office**  
Kintek S.R.L.  
Mappano - Torino  
Italy



**Production Plant Hungary**  
Kintek Tooling KFT  
Bekescsaba  
Hungary



**Gait S.r.l.**  
Bologna - Italy

**KINTEK s.r.l.**

Società a responsabilità limitata Unipersonale  
Società soggetta alla direzione  
e coordinamento di KINTEK HOLDING S.r.l.

Via Goretta 88/G - 10079 MAPPANO (TO) - Italy  
Tel.: +39 011 99 68 065 - Fax: +39 011 99 65 662  
E-mail: [info@kintek.it](mailto:info@kintek.it) - Url: [www.kintek.it](http://www.kintek.it)

Cod. Fisc. e Partita Iva: 08746040016 - Cap. Soc.: € 179.850,00  
R.E.A: 997323 - R.I. Uff. To: 08746040016  
Codice Univoco: M5UXCR1

**KINTEK®**